

Caspase-8 Rabbit mAb (AR1426)

Key Features

Host Species:	Rabbit
Reactivity:	Human, Mouse, Rat
Applications:	WB, IHC, IF, IP, ELISA
Isotype:	IgG, Kappa
MW:	55kD (Calculated) 55kD (Observed)

Recommended Dilution Ratios

IHC:	1:1000-4000
WB:	1:2000-10000
IF:	1:200-1000
ELISA:	1:5000-20000
IP:	1:50-200

Storage

-15°C to -25°C/1 year (Do not lower than -25°C)

Basic Information

Clonality	Monoclonal
-----------	------------

Immunogen Information

Specificity	Endogenous
-------------	------------

Target Information

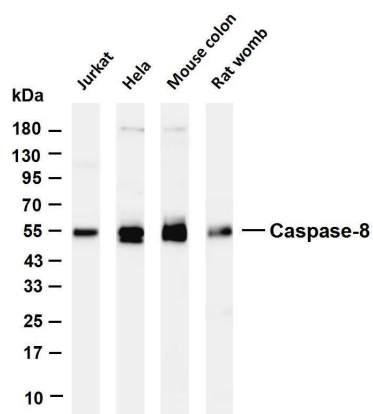
Gene name	CASP8
Protein Name	Caspase8

Organism	Gene ID	UniProt ID
Human	841	Q14790
Mouse		O89110

Cellular Localization	Cytoplasm. Nucleus.
-----------------------	---------------------

Tissue specificity	Isoform 1, isoform 5 and isoform 7 are expressed in a wide variety of tissues. Highest expression in peripheral blood leukocytes, spleen, thymus and liver. Barely detectable in brain, testis and skeletal muscle.
--------------------	---

Validation Data



Various whole cell lysates were separated by 4-20% SDS-PAGE, and the membrane was blotted with anti-Caspase-8 antibody. The HRP-conjugated Goat anti-Rabbit IgG(H + L) antibody was used to detect the antibody.

Lane 1: Jurkat

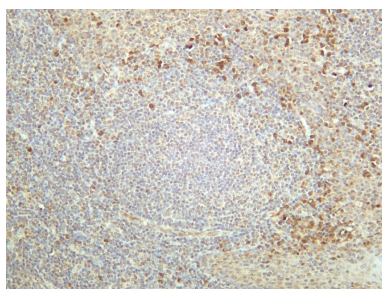
Lane 2: HeLa

Lane 3: Mouse colon

Lane 4: Rat womb

Predicted band size: 55kDa

Observed band size: 55kDa



Human tonsil was stained with anti-Caspase-8 rabbit antibody

For Research Use Only