

## CD11b Rabbit mAb (AR1427)

### Key Features

Host Species:	Rabbit
Reactivity:	Human,Mouse,Rat
Applications:	WB,IHC,IF,IP,ELISA
Isotype:	IgG,Kappa
MW:	127kD (Calculated) 170kD (Observed)

### Recommended Dilution Ratios

IHC:	1:4000-20000
WB:	1:2000-10000
IF:	1:200-1000
ELISA:	1:5000-20000
IP:	1:50-200

### Storage

-15°C to -25°C/1 year (Do not lower than -25°C)

### Basic Information

Clonality	Monoclonal
-----------	------------

### Immunogen Information

Specificity	Endogenous
-------------	------------

### Target Information

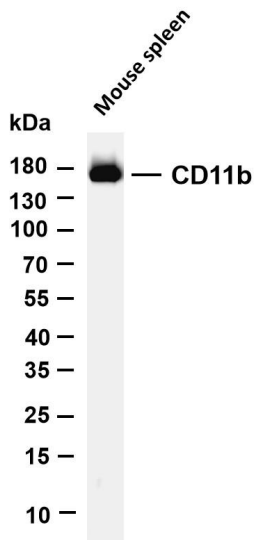
Gene name	ITGAM CD11B CR3A
Protein Name	Integrin alpha-M (CD11 antigen-like family member B) (CR-3 alpha chain) (Cell surface glycoprotein MAC-1 subunit alpha) (Leukocyte adhesion receptor MO1) (Neutrophil adherence receptor) (CD antigen CD11b)

Organism	Gene ID	UniProt ID
Human	3684	P11215
Mouse		P05555

Cellular Localization	Membrane
Tissue specificity	Predominantly expressed in monocytes and granulocytes

(PubMed: 1346576). Expressed in neutrophils (at protein level)  
(PubMed: 21193407).

## Validation Data

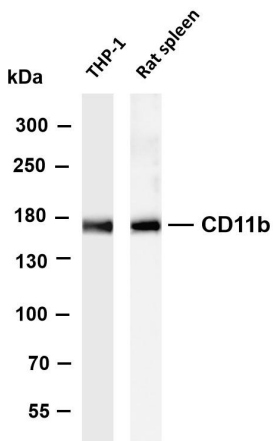


Various whole cell lysates were separated by 4-20% SDS-PAGE, and the membrane was blotted with anti-CD11b antibody. The HRP-conjugated Goat anti-Rabbit IgG(H + L) antibody was used to detect the antibody.

Lane 1: Mouse spleen

Predicted band size: 127kDa

Observed band size: 170kDa



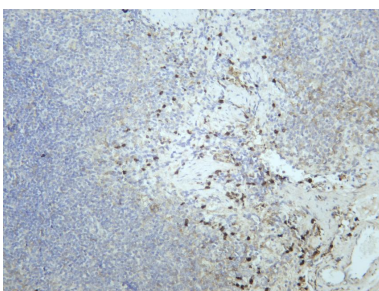
Various whole cell lysates were separated by 4-20% SDS-PAGE, and the membrane was blotted with anti-CD11b antibody. The HRP-conjugated Goat anti-Rabbit IgG(H + L) antibody was used to detect the antibody.

Lane 1: THP-1

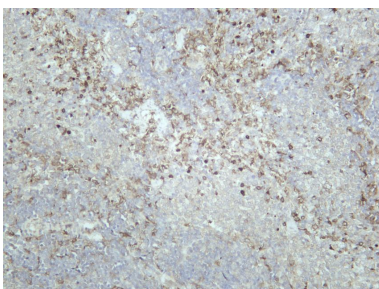
Lane 2: Rat spleen

Predicted band size: 127kDa

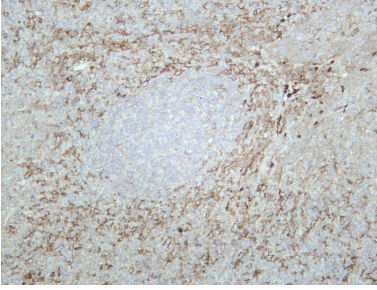
Observed band size: 170kDa



Mouse spleen was stained with anti-CD11b rabbit antibody



Rat spleen was stained with anti-CD11b rabbit antibody



Human tonsil was stained with anti-CD11b rabbit antibody

For Research Use Only