

CD90 Rabbit mAb (AR1430)

Key Features

| | |
|---------------|--------------------------------------|
| Host Species: | Rabbit |
| Reactivity: | Human, Mouse |
| Applications: | WB, IHC, IF, IP, ELISA |
| Isotype: | IgG, Kappa |
| MW: | 18kD (Calculated) 22kD (Observed) |

Recommended Dilution Ratios

| | |
|--------|--------------|
| IHC: | 1:2000-10000 |
| WB: | 1:2000-10000 |
| IF: | 1:200-1000 |
| ELISA: | 1:5000-20000 |
| IP: | 1:50-200 |

Storage

-15°C to -25°C/1 year (Do not lower than -25°C)

Basic Information

| | |
|-----------|------------|
| Clonality | Monoclonal |
|-----------|------------|

Immunogen Information

| | |
|-------------|------------|
| Specificity | Endogenous |
|-------------|------------|

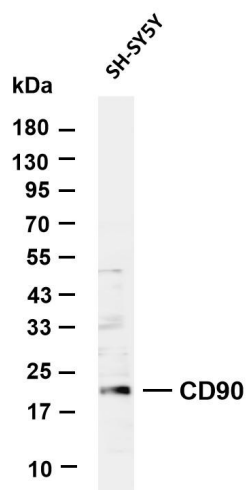
Target Information

| | |
|--------------|-----------------------------|
| Gene name | THY1 |
| Protein Name | Thy-1 membrane glycoprotein |

| Organism | Gene ID | UniProt ID |
|----------|---------|------------|
| Human | 7070 | P04216 |
| Mouse | | P01831 |

| | |
|-----------------------|--|
| Cellular Localization | Cell membrane; Lipid-anchor, GPI-anchor. |
| Tissue specificity | Amygdala, Brain, Eye, Liver |

Validation Data

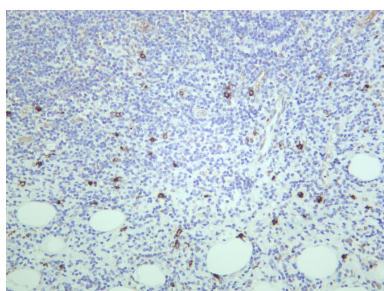


Various whole cell lysates were separated by 4-20% SDS-PAGE, and the membrane was blotted with anti-CD90 antibody. The HRP-conjugated Goat anti-Rabbit IgG(H + L) antibody was used to detect the antibody.

Lane 1: SH-SY5Y

Predicted band size: 18kDa

Observed band size: 22kDa



Human tonsil was stained with anti-CD90 rabbit antibody

For Research Use Only