

CENP-A Rabbit mAb (AR1432)

Key Features

Host Species:	Rabbit
Reactivity:	Human
Applications:	WB,IF,IP,ELISA
Isotype:	IgG,Kappa
MW:	16kD (Calculated) 16kD (Observed)

Recommended Dilution Ratios

WB:	1:2000-10000
IF:	1:200-1000
ELISA:	1:5000-20000
IP:	1:50-200

Storage

-15°C to -25°C/1 year (Do not lower than -25°C)

Basic Information

Clonality	Monoclonal
-----------	------------

Immunogen Information

Specificity	Endogenous
-------------	------------

Target Information

Gene name	CENPA
Protein Name	Histone H3-like centromeric protein A

Organism	Gene ID	UniProt ID
Human	1058	P49450
Mouse		O35216

Cellular Localization

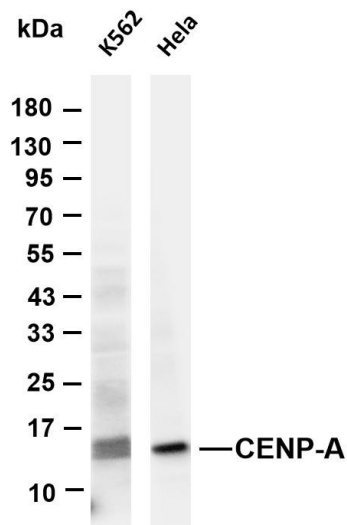
Nucleus. Chromosome, centromere, kinetochore. Chromosome, centromere. Localizes exclusively in the kinetochore domain of centromeres. Occupies a compact domain at the inner kinetochore plate stretching across 2 thirds of the length of the constriction but encompassing only one third of the constriction width and height (PubMed:19114591). Phosphorylation at Ser-68 during early

mitosis abolishes association with chromatin and centromeres and results in dispersed nuclear location (PubMed:25556658).

Tissue specificity

Epithelium, Uterus

Validation Data



Various whole cell lysates were separated by 4-20% SDS-PAGE, and the membrane was blotted with anti-CENP-A antibody. The HRP-conjugated Goat anti-Rabbit IgG(H + L) antibody was used to detect the antibody.

Lane 1: K562

Lane 2: HeLa

Predicted band size: 16kDa

Observed band size: 16kDa

For Research Use Only