

Chk1 Rabbit mAb (AR1433)

Key Features

Host Species:	Rabbit
Reactivity:	Human,Mouse,Rat
Applications:	WB,IF,IP,ELISA
Isotype:	IgG,Kappa
MW:	54kD (Calculated) 54kD (Observed)

Recommended Dilution Ratios

WB:	1:2000-10000
IF:	1:200-1000
ELISA:	1:5000-20000
IP:	1:50-200

Storage

-15°C to -25°C/1 year (Do not lower than -25°C)

Basic Information

Clonality	Monoclonal
-----------	------------

Immunogen Information

Specificity	Endogenous
-------------	------------

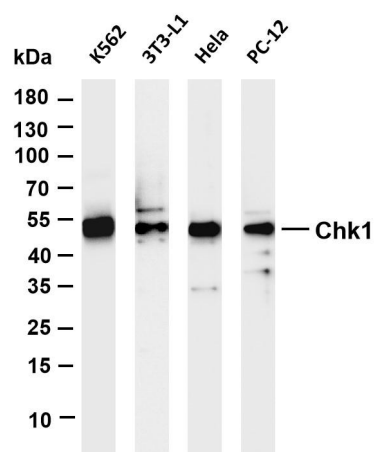
Target Information

Gene name	CHEK1
Protein Name	Serine/threonine-protein kinase Chk1

Organism	Gene ID	UniProt ID
Human	1111	O14757
Mouse	12649	O35280
Rat	140583	Q91ZN7

Cellular Localization	Nucleus
Tissue specificity	Expressed ubiquitously with the most abundant expression in thymus, testis, small intestine and colon.

Validation Data



Various whole cell lysates were separated by 4-20% SDS-PAGE, and the membrane was blotted with anti-Chk1 antibody. The HRP-conjugated Goat anti-Rabbit IgG(H + L) antibody was used to detect the antibody.

Lane 1: K562

Lane 2: 3T3-L1

Lane 3: HeLa

Lane 4: PC-12

Predicted band size: 54kDa

Observed band size: 54kDa

For Research Use Only