

Cdc25C Rabbit mAb (AR1431)

Key Features

| | |
|---------------|--------------------------------------|
| Host Species: | Rabbit |
| Reactivity: | Human,Rat |
| Applications: | WB,IHC,IF,IP,ELISA |
| Isotype: | IgG,Kappa |
| MW: | 53kD (Calculated) 65kD (Observed) |

Recommended Dilution Ratios

| | |
|--------|--------------|
| IHC: | 1:1000-4000 |
| WB: | 1:2000-10000 |
| IF: | 1:200-1000 |
| ELISA: | 1:5000-20000 |
| IP: | 1:50-200 |

Storage

-15°C to -25°C/1 year (Do not lower than -25°C)

Basic Information

| | |
|-----------|------------|
| Clonality | Monoclonal |
|-----------|------------|

Immunogen Information

| | |
|-------------|------------|
| Specificity | Endogenous |
|-------------|------------|

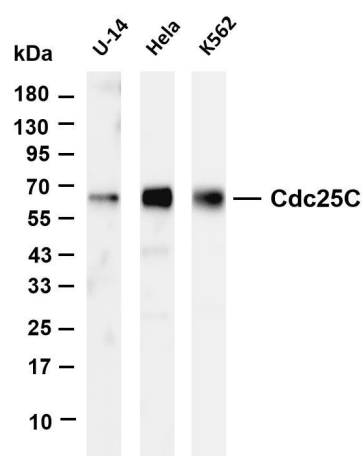
Target Information

| | |
|--------------|-------------------------------|
| Gene name | CDC25C |
| Protein Name | M-phase inducer phosphatase 3 |

| Organism | Gene ID | UniProt ID |
|----------|---------|------------|
| Human | 995 | P30307 |
| Mouse | | P48967 |

| | |
|-----------------------|---|
| Cellular Localization | Nucleus |
| Tissue specificity | Colon carcinoma, Epithelium, Skin, Testis |

Validation Data



Various whole cell lysates were separated by 4-20% SDS-PAGE, and the membrane was blotted with anti-Cdc25C antibody. The HRP-conjugated Goat anti-Rabbit IgG(H + L) antibody was used to detect the antibody.

Lane 1: U-14

Lane 2: HeLa

Lane 3: K562

Predicted band size: 53kDa

Observed band size: 65kDa

For Research Use Only