

Claudin 3 Rabbit mAb (AR1434)

Key Features

Host Species:	Rabbit
Reactivity:	Human,Mouse,Rat
Applications:	WB,IHC,IF,IP,ELISA
Isotype:	IgG,Kappa
MW:	23kD (Calculated) 20kD (Observed)

Recommended Dilution Ratios

IHC:	1:200-1000
WB:	1:2000-10000
IF:	1:200-1000
ELISA:	1:5000-20000
IP:	1:50-200

Storage

-15°C to -25°C/1 year (Do not lower than -25°C)

Basic Information

Clonality	Monoclonal
-----------	------------

Immunogen Information

Specificity	Endogenous
-------------	------------

Target Information

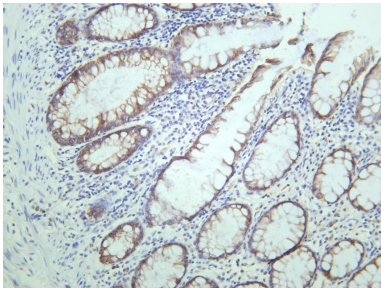
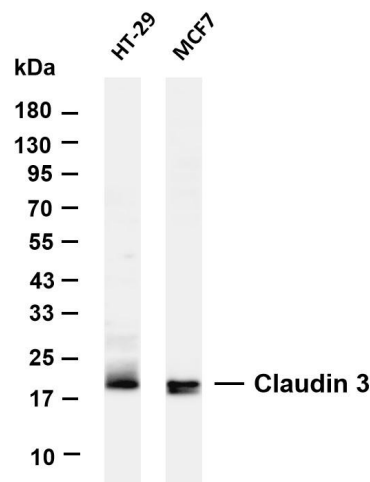
Gene name	CLDN3 C7orf1 CPETR2
Protein Name	C7orf1; Claudin3; CLD3_HUMAN; CLDN 3; Cldn3; Clostridium perfringens enterotoxin receptor 2; CPER2; CPE receptor2; CPE-R2; CPE-receptor2; CPETR2; CPETR2; HRVP1; Rat ventral prostate 1 like protein; Rat ventral prostate.1 protein homolog; RVP1; Ventral prostate.1 like protein; Ventral prostate.1 protein homolog

Organism	Gene ID	UniProt ID
Human	1365	O15551
Mouse		Q9Z0G9
Rat		Q63400

Cellular Localization

Tissue specificity

Validation Data



Membranous

Colon/ Appendix

Various whole cell lysates were separated by 4-20% SDS-PAGE, and the membrane was blotted with anti-Claudin 3 antibody. The HRP-conjugated Goat anti-Rabbit IgG(H + L) antibody was used to detect the antibody.

Lane 1: HT-29

Lane 2: MCF7

Predicted band size: 23kDa

Observed band size: 20kDa

Human colon was stained with anti-Claudin 3 rabbit antibody

For Research Use Only