

Collagen I A1 Rabbit mAb (AR1435)

Key Features

Host Species:	Rabbit
Reactivity:	Human, Mouse, Rat
Applications:	WB, IHC, IF, IP, ELISA
Isotype:	IgG, Kappa
MW:	139kD (Calculated) 220kD (Observed)

Recommended Dilution Ratios

IHC:	1:200-1000
WB:	1:2000-10000
IF:	1:200-1000
ELISA:	1:5000-20000
IP:	1:50-200

Storage

-15°C to -25°C/1 year (Do not lower than -25°C)

Basic Information

Clonality	Monoclonal
-----------	------------

Immunogen Information

Specificity	Endogenous
-------------	------------

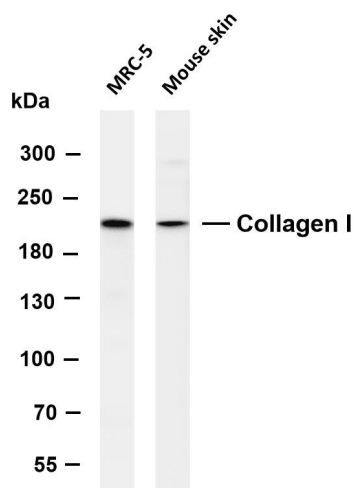
Target Information

Gene name	COL1A1
Protein Name	Collagen I α 1 (Cleaved-Ala1218)

Organism	Gene ID	UniProt ID
Human	1277	P02452
Mouse	12842	P11087
Rat	29393	P02454

Cellular Localization	Cytoplasmic
Tissue specificity	Forms the fibrils of tendon, ligaments and bones. In bones the fibrils are mineralized with calcium hydroxyapatite.

Validation Data



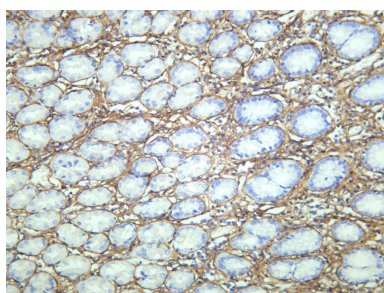
Various whole cell lysates were separated by 4-8% SDS-PAGE, and the membrane was blotted with anti-Collagen I antibody. The HRP-conjugated Goat anti-Rabbit IgG(H + L) antibody was used to detect the antibody.

Lane 1: MRC-5

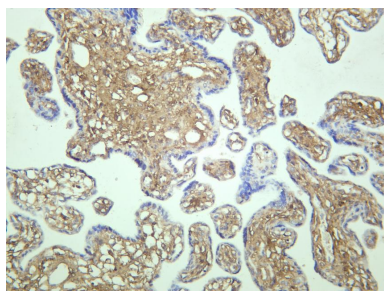
Lane 2: Mouse skin

Predicted band size: 139kDa

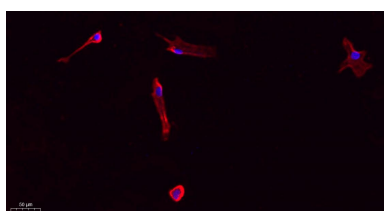
Observed band size: 220kDa



Human stomach was stained with anti-Collagen I rabbit antibody



Human placenta was stained with anti-Collagen I rabbit antibody



Immunofluorescence analysis of A549.

1. primary Antibody(red) was diluted at 1:200(4°C overnight).
2. Goat Anti Rabbit IgG (H&L) - Alexa Fluor 594 Secondary antibody was diluted at 1:1000(room temperature, 50min).
3. DAPI (blue) 10min.

For Research Use Only