

CPT1A Rabbit mAb (AR1437)

Key Features

Host Species:	Rabbit
Reactivity:	Human, Mouse, Rat
Applications:	WB, IHC, IF, IP, ELISA
Isotype:	IgG, Kappa
MW:	88kD (Calculated) 88kD (Observed)

Recommended Dilution Ratios

IHC:	1:200-1000
WB:	1:2000-10000
IF:	1:200-1000
ELISA:	1:5000-20000
IP:	1:50-200

Storage

-15°C to -25°C/1 year (Do not lower than -25°C)

Basic Information

Clonality	Monoclonal
-----------	------------

Immunogen Information

Specificity	Endogenous
-------------	------------

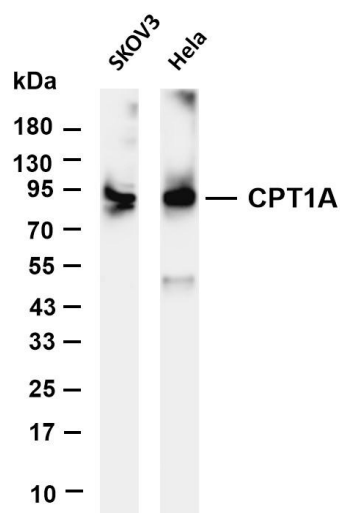
Target Information

Gene name	CPT1A CPT1
Protein Name	CPT1A

Organism	Gene ID	UniProt ID
Human	1374	P50416
Mouse	12894	P97742
Rat	25757	P32198

Cellular Localization	Mitochondrion outer membrane
Tissue specificity	Strong expression in kidney and heart, and lower in liver and skeletal muscle.

Validation Data



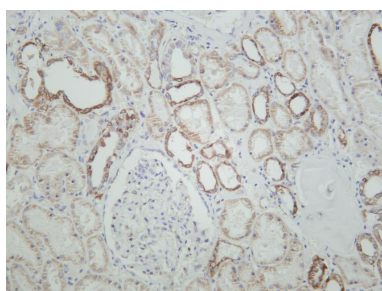
Various whole cell lysates were separated by 4-20% SDS-PAGE, and the membrane was blotted with anti-CPT1A antibody. The HRP-conjugated Goat anti-Rabbit IgG(H + L) antibody was used to detect the antibody.

Lane 1: SKOV3

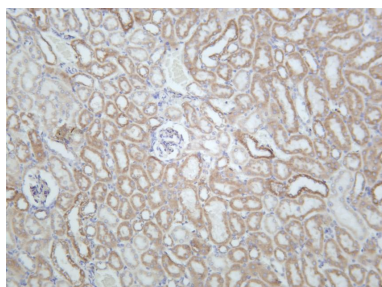
Lane 2: HeLa

Predicted band size: 88kDa

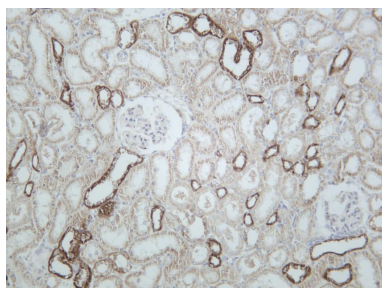
Observed band size: 88kDa



Human kidney was stained with anti-CPT1A rabbit antibody



Mouse kidney was stained with anti-CPT1A rabbit antibody



Rat kidney was stained with anti-CPT1A rabbit antibody

For Research Use Only