

Collagen II A1 Rabbit mAb (AR1436)

Key Features

Host Species:	Rabbit
Reactivity:	Human
Applications:	WB,IHC,IF,IP,ELISA
Isotype:	IgG,Kappa
MW:	142kD (Calculated) 200kD (Observed)

Recommended Dilution Ratios

IHC:	1:100-500
WB:	1:1000-5000
IF:	1:200-1000
ELISA:	1:5000-20000
IP:	1:50-200

Storage

-15°C to -25°C/1 year (Do not lower than -25°C)

Basic Information

Clonality	Monoclonal
-----------	------------

Immunogen Information

Specificity	Endogenous
-------------	------------

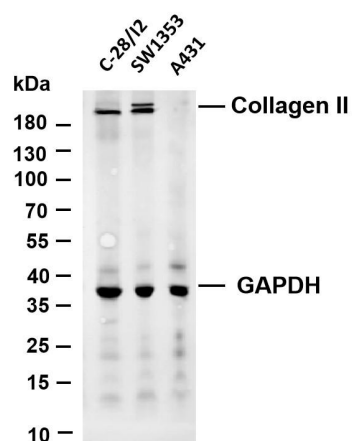
Target Information

Gene name	COL2A1
Protein Name	Collagen Type II

Organism	Gene ID	UniProt ID
Human	1280	P02458

Cellular Localization	Cytoplasmic
Tissue specificity	Isoform 2 is highly expressed in juvenile chondrocyte and low in fetal chondrocyte.

Validation Data



Various whole cell lysates were separated by 4-20% SDS-PAGE, and the membrane was blotted with anti-Collagen II antibody. The HRP-conjugated Goat anti-Rabbit IgG(H + L) antibody was used to detect the antibody.

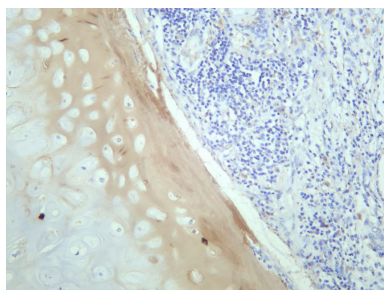
Lane 1: C-28/I2

Lane 2: SW1353

Lane 3: A431

Predicted band size: 142kDa

Observed band size: 200kDa



Human cartilage was stained with anti-Collagen II rabbit antibody

For Research Use Only