

CPVL Rabbit mAb (AR1438)

Key Features

| | |
|---------------|--------------------------------------|
| Host Species: | Rabbit |
| Reactivity: | Human |
| Applications: | WB,IHC |
| Isotype: | IgG,Kappa |
| MW: | 55kD (Calculated) 52kD (Observed) |

Recommended Dilution Ratios

| | |
|------|-------------|
| IHC: | 1:100-300 |
| WB: | 1:1000-5000 |

Storage

-15°C to -25°C/1 year (Do not lower than -25°C)

Basic Information

| | |
|-----------|------------|
| Clonality | Monoclonal |
|-----------|------------|

Immunogen Information

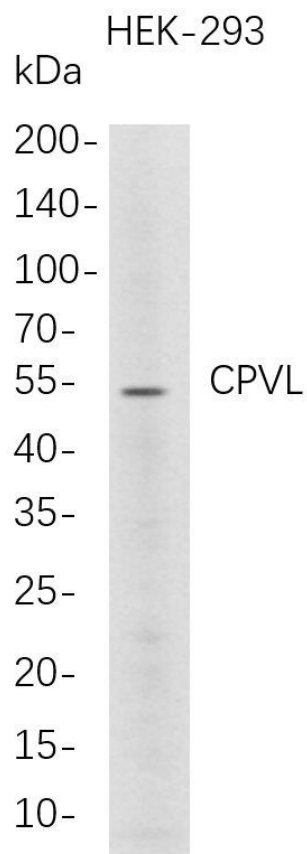
| | |
|-------------|------------|
| Specificity | Endogenous |
|-------------|------------|

Target Information

| | |
|--------------|---|
| Gene name | CPVL; VLP; PSEC0124; UNQ197/PRO223 |
| Protein Name | Probable serine carboxypeptidase CPVL; Carboxypeptidase, vitellogenic-like; Vitellogenic carboxypeptidase-like protein; VCP-like protein; hVLP; |

| | Organism | Gene ID | UniProt ID |
|--------------------|---|---------|------------|
| | Human | 54504 | Q9H3G5 |
| | Mouse | 71287 | Q9D3S9 |
| | Rat | 502774 | Q4QR71 |
| Tissue specificity | Expressed in macrophages but not in other leukocytes. Abundantly expressed in heart and kidney. Also expressed in spleen, leukocytes, and placenta. | | |

Validation Data



Western Blot analysis of HEK-293 whole cell lysates were separated by 4-20% SDS-PAGE, and the membrane was blotted with anti-CPVL rabbit mAb. The HRP-conjugated Goat anti-Rabbit IgG(H + L) antibody was used to detect the antibody.

Lane1: HEK-293

Predicted band size:55kDa

Observed band size:52kDa

For Research Use Only