

## CSHL1 Rabbit mAb (AR1439)

### Key Features

Host Species:	Rabbit
Reactivity:	Human
Applications:	WB,IHC
Isotype:	IgG,Kappa
MW:	25kD (Calculated) 24kD (Observed)

### Recommended Dilution Ratios

IHC:	1:100-300
WB:	1:1000-5000

### Storage

-15°C to -25°C/1 year (Do not lower than -25°C)

### Basic Information

Clonality	Monoclonal
-----------	------------

### Immunogen Information

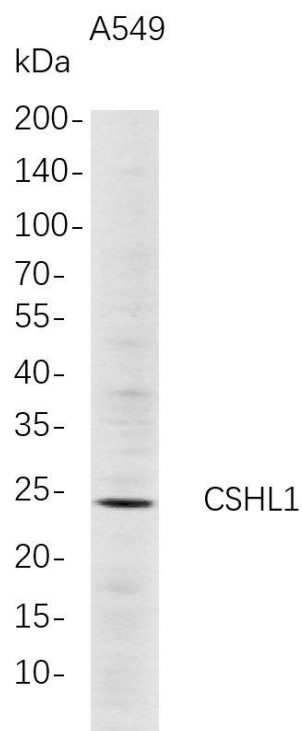
Specificity	Endogenous
-------------	------------

### Target Information

Gene name	CSHL1; CSHP1; CSL
Protein Name	Chorionic somatomammotropin hormone-like 1; Chorionic somatomammotropin like; Lactogen-like;

	Organism	Gene ID	UniProt ID
	Human	1444	Q4406
Cellular Localization	Secreted.		

## Validation Data



Western Blot analysis of A549 whole cell lysates were separated by 4-20% SDS-PAGE, and the membrane was blotted with anti-CSHL1 rabbit mAb. The HRP-conjugated Goat anti-Rabbit IgG(H + L) antibody was used to detect the antibody.

Lane1: A549

Predicted band size:25kDa

Observed band size:24kDa

For Research Use Only