

CTCF Rabbit mAb (AR1440)

Key Features

Host Species:	Rabbit
Reactivity:	Human, Mouse, Rat
Applications:	WB, IHC, IF, IP, ELISA
Isotype:	IgG, Kappa
MW:	83kD (Calculated) 140kD (Observed)

Recommended Dilution Ratios

IHC:	1:2000-10000
WB:	1:2000-10000
IF:	1:200-1000
ELISA:	1:5000-20000
IP:	1:50-200

Storage

-15°C to -25°C/1 year (Do not lower than -25°C)

Basic Information

Clonality	Monoclonal
-----------	------------

Immunogen Information

Specificity	Endogenous
-------------	------------

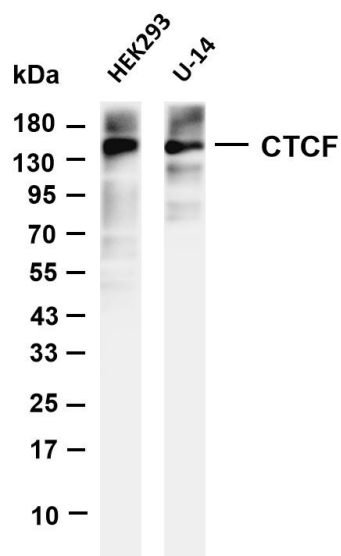
Target Information

Gene name	CTCF
Protein Name	Transcriptional repressor CTCF

Organism	Gene ID	UniProt ID
Human	10664	P49711
Mouse		Q61164

Cellular Localization	Nucleus
Tissue specificity	Ubiquitous. Absent in primary spermatocytes.

Validation Data



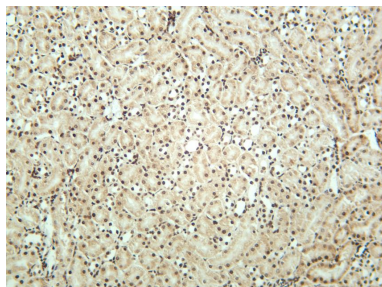
Various whole cell lysates were separated by 4-20% SDS-PAGE, and the membrane was blotted with anti-CTCF antibody. The HRP-conjugated Goat anti-Rabbit IgG(H + L) antibody was used to detect the antibody.

Lane 1: HEK293

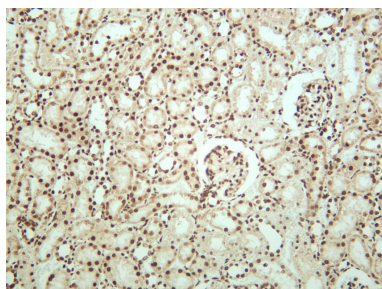
Lane 2: U-14

Predicted band size: 83kDa

Observed band size: 140kDa



Mouse kidney was stained with anti-CTCF rabbit antibody



Rat kidney was stained with anti-CTCF rabbit antibody

For Research Use Only