

DDX58 Rabbit mAb (AR1444)

Key Features

Host Species:	Rabbit
Reactivity:	Human, Mouse
Applications:	WB, IHC, IF, IP, ELISA
Isotype:	IgG, Kappa
MW:	107kD (Calculated) 107kD (Observed)

Recommended Dilution Ratios

IHC:	1:200-1000
WB:	1:500-2000
IF:	1:200-1000
ELISA:	1:5000-20000
IP:	1:50-200

Storage

-15°C to -25°C/1 year (Do not lower than -25°C)

Basic Information

Clonality	Monoclonal
-----------	------------

Immunogen Information

Specificity	Endogenous
-------------	------------

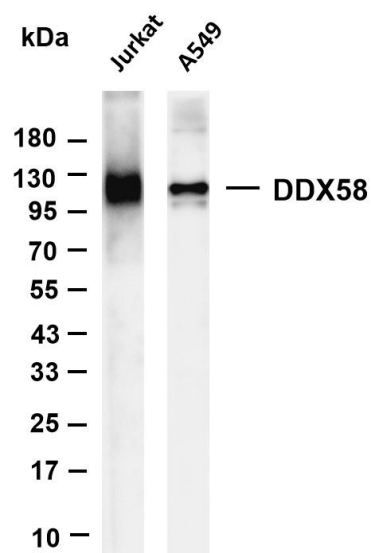
Target Information

Gene name	DDX58
Protein Name	Probable ATP-dependent RNA helicase DDX58 (DEAD box protein 58) (RIG-I-like receptor 1) (RLR-1) (Retinoic

Organism	Gene ID	UniProt ID
Human	23586	O95786
Mouse		Q6Q899

Cellular Localization	Cytoplasm
Tissue specificity	Present in vascular smooth cells (at protein level).

Validation Data



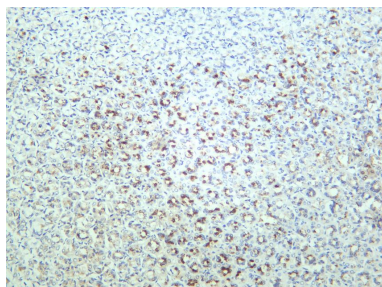
Various whole cell lysates were separated by 4-20% SDS-PAGE, and the membrane was blotted with anti-DDX58 antibody. The HRP-conjugated Goat anti-Rabbit IgG(H + L) antibody was used to detect the antibody.

Lane 1: Jurkat

Lane 2: A549

Predicted band size: 107kDa

Observed band size: 107kDa



Human stomach was stained with anti-DDX58 rabbit antibody

For Research Use Only