

DHRS1 Rabbit mAb (AR1446)

Key Features

Host Species:	Rabbit
Reactivity:	Human
Applications:	WB
Isotype:	IgG,Kappa
MW:	34kD (Calculated) 34kD (Observed)

Recommended Dilution Ratios

WB:	1:1000-5000
-----	-------------

Storage

-15°C to -25°C/1 year (Do not lower than -25°C)

Basic Information

Clonality	Monoclonal
-----------	------------

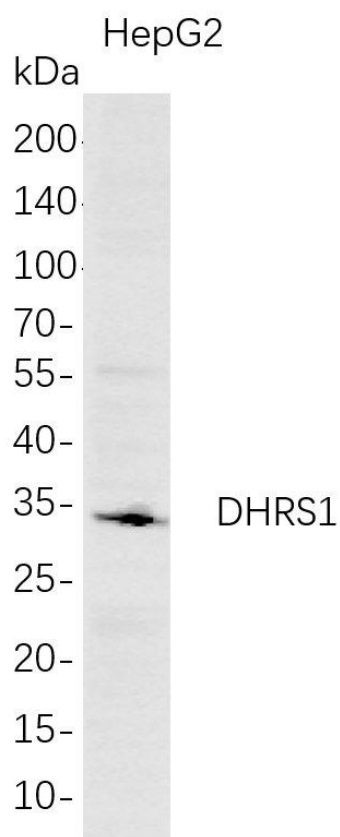
Immunogen Information

Specificity	Endogenous
-------------	------------

Target Information

Gene name	DHRS1; SDR19C1		
Protein Name	Dehydrogenase/reductase SDR family member 1; Short chain dehydrogenase/reductase family 19C member 1; Protein SDR19C1;		
	Organism	Gene ID	UniProt ID
	Human	115817	Q96LJ7
	Mouse	52585	Q99L04
Cellular Localization	Endoplasmic reticulum. Note=May be attached to the ER membrane by its C-terminus segment.		
Tissue specificity	Detected in heart, liver, adrenal glands, and at low levels in skeletal muscle, kidney, pancreas and brain. {ECO:0000269 PubMed:12153138, ECO:0000269 PubMed:30031147}.		

Validation Data



Western Blot analysis of HepG2 whole cell lysates were separated by 4-20% SDS-PAGE, and the membrane was blotted with anti-DHRS1 rabbit mAb. The HRP-conjugated Goat anti-Rabbit IgG(H + L) antibody was used to detect the antibody.

Lane1: HepG2

Predicted band size: 34kDa

Observed band size: 34kDa

For Research Use Only