

Dystrophin Rabbit mAb (AR1447)

Key Features

Host Species:	Rabbit
Reactivity:	Human, Mouse, Rat
Applications:	WB, IHC, IF, IP, ELISA
Isotype:	IgG, Kappa
MW:	427kD (Calculated) 427kD (Observed)

Recommended Dilution Ratios

IHC:	1:200-1000
WB:	1:500-2000
IF:	1:200-1000
ELISA:	1:5000-20000
IP:	1:50-200

Storage

-15°C to -25°C/1 year (Do not lower than -25°C)

Basic Information

Clonality	Monoclonal
-----------	------------

Immunogen Information

Specificity	Endogenous
-------------	------------

Target Information

Gene name	DMD
Protein Name	Dystrophin

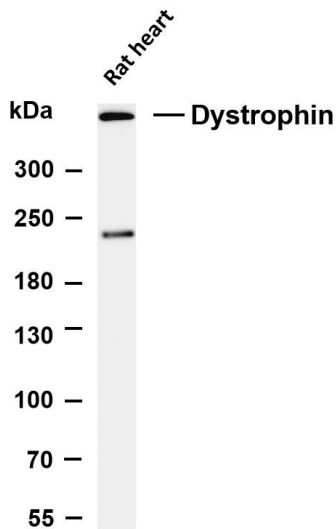
Organism	Gene ID	UniProt ID
Human	1756	P11532
Mouse		P11531
Rat		P11530

Cellular Localization	Cell membrane, sarcolemma; Peripheral membrane protein; Cytoplasmic side. Cytoplasm, cytoskeleton. Cell junction, synapse, postsynaptic cell membrane. In muscle cells, sarcolemma localization requires the presence of ANK2, while localization to
-----------------------	--

costameres requires the presence of ANK3. Localizes to neuromuscular junctions (NMJs). In adult muscle, NMJ localization depends upon ANK2 presence, but not in newborn animals. Expressed in muscle fibers accumulating in the costameres of myoplasm at the sarcolemma. Expressed in brain, muscle, kidney, lung and testis. Most tissues contain transcripts of multiple isoforms. Isoform 15: Only isoform to be detected in heart and liver and is also expressed in brain, testis and hepatoma cells.

Tissue specificity

Validation Data

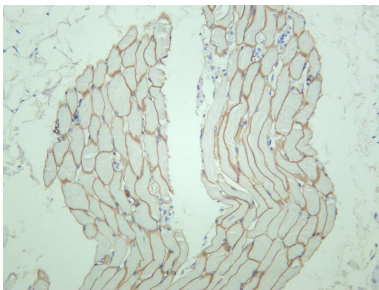


Various whole cell lysates were separated by 4-8% SDS-PAGE, and the membrane was blotted with anti-Dystrophin antibody. The HRP-conjugated Goat anti-Rabbit IgG (H + L) antibody was used to detect the antibody.

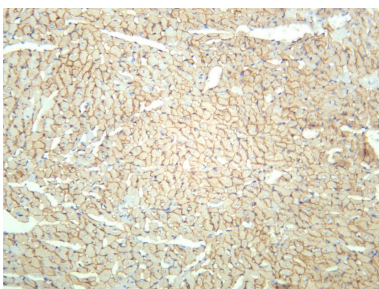
Lane 1: Rat heart

Predicted band size: 427kDa

Observed band size: 427kDa



Human skeletal muscle was stained with anti-Dystrophin rabbit antibody



Mouse cardiac muscle was stained with anti-Dystrophin rabbit antibody

For Research Use Only