

DPEP3 Rabbit mAb (AR1450)

Key Features

| | |
|---------------|--------------------------------------|
| Host Species: | Rabbit |
| Reactivity: | Human |
| Applications: | WB,IHC,IP |
| Isotype: | IgG,Kappa |
| MW: | 54kD (Calculated) 54kD (Observed) |

Recommended Dilution Ratios

| | |
|------|-------------|
| WB: | 1:1000-5000 |
| IHC: | 1:100-300 |
| IP: | 1:50-100 |

Storage

-15°C to -25°C/1 year (Do not lower than -25°C)

Basic Information

| | |
|-----------|------------|
| Clonality | Monoclonal |
|-----------|------------|

Immunogen Information

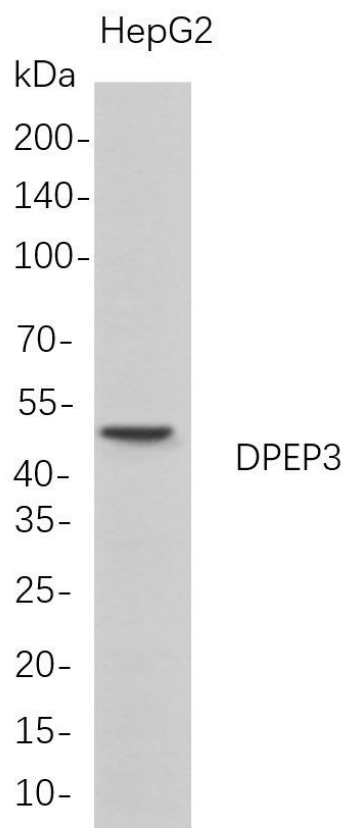
| | |
|-------------|------------|
| Specificity | Endogenous |
|-------------|------------|

Target Information

| | |
|--------------|-----------------------|
| Gene name | DPEP3; UNQ834/PRO1772 |
| Protein Name | Dipeptidase 3 |

| | Organism | Gene ID | UniProt ID |
|-----------------------|-------------------------------------|---------|------------|
| | Human | 64180 | Q9H4B8 |
| Cellular Localization | Membrane; Lipid-anchor, GPI-anchor. | | |

Validation Data



Western Blot analysis of HepG2 whole cell lysates were separated by 4-20% SDS-PAGE, and the membrane was blotted with anti-DPEP3 rabbit mAb. The HRP-conjugated Goat anti-Rabbit IgG(H + L) antibody was used to detect the antibody.

Lane 1: HepG2

Predicted band size: 54kDa

Observed band size: 54kDa

For Research Use Only