

Doublecortin Rabbit mAb (AR1449)

Key Features

Host Species:	Rabbit
Reactivity:	Human, Mouse, Rat
Applications:	WB, IHC, IF, IP, ELISA
Isotype:	IgG, Kappa
MW:	41kD (Calculated) 41kD (Observed)

Recommended Dilution Ratios

IHC:	1:50-200
WB:	1:2000-10000
IF:	1:200-1000
ELISA:	1:5000-20000
IP:	1:50-200

Storage

-15°C to -25°C/1 year (Do not lower than -25°C)

Basic Information

Clonality	Monoclonal
-----------	------------

Immunogen Information

Specificity	Endogenous
-------------	------------

Target Information

Gene name	DCX
Protein Name	Neuronal migration protein doublecortin

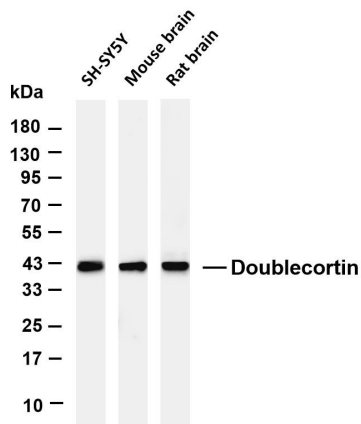
Organism	Gene ID	UniProt ID
Human	1641	O43602
Mouse	13193	O88809
Rat		Q9ESI7

Cellular Localization	Cytoplasm. Cell projection, neuron projection. Localizes at neurite tips.
-----------------------	---

Tissue specificity	Highly expressed in neuronal cells of fetal brain (in the majority of cells of the cortical plate, intermediate zone and ventricular zone),
--------------------	---

but not expressed in other fetal tissues. In the adult, highly expressed in the brain frontal lobe, but very low expression in other regions of brain, and not detected in heart, placenta, lung, liver, skeletal muscles, kidney and pancreas.

Validation Data



Various whole cell lysates were separated by 4-20% SDS-PAGE, and the membrane was blotted with anti-Doublecortin antibody. The HRP-conjugated Goat anti-Rabbit IgG (H + L) antibody was used to detect the antibody.

Lane 1: SH-SY5Y

Lane 2: Mouse brain

Lane 3: Rat brain

Predicted band size: 41kDa

Observed band size: 41kDa

For Research Use Only