

## EGR1 Rabbit mAb (AR1451)

### Key Features

Host Species:	Rabbit
Reactivity:	Human, Mouse, Rat
Applications:	WB, IHC, IF, IP, ELISA
Isotype:	IgG, Kappa
MW:	57kD (Calculated) 100kD (Observed)

### Recommended Dilution Ratios

IHC:	1:1000-4000
WB:	1:2000-10000
IF:	1:200-1000
ELISA:	1:5000-20000
IP:	1:50-200

### Storage

-15°C to -25°C/1 year (Do not lower than -25°C)

### Basic Information

Clonality	Monoclonal
-----------	------------

### Immunogen Information

Specificity	Endogenous
-------------	------------

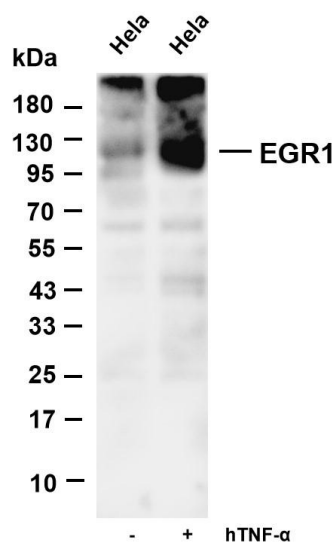
### Target Information

Gene name	EGR1
Protein Name	Early growth response protein 1

Organism	Gene ID	UniProt ID
Human	1958	P18146
Mouse		P08046

Cellular Localization	Cytoplasm, Nucleus
Tissue specificity	Detected in neutrophils (at protein level).

## Validation Data



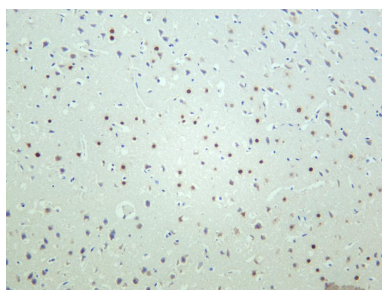
Various whole cell lysates were separated by 4-20% SDS-PAGE, and the membrane was blotted with anti-EGR1 antibody. The HRP-conjugated Goat anti-Rabbit IgG(H + L) antibody was used to detect the antibody.

Lane 1: HeLa

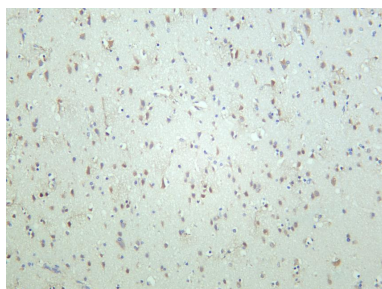
Lane 2: HeLa was treated with hTNF- $\alpha$  (20 ng/mL) for 5 minutes

Predicted band size: 57kDa

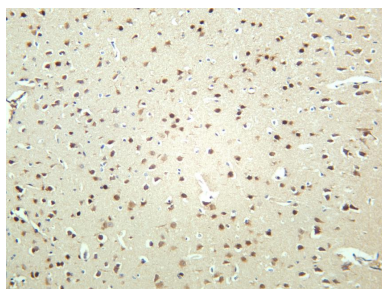
Observed band size: 100kDa



Rat brain was stained with anti-EGR1 rabbit antibody



Human brain was stained with anti-EGR1 rabbit antibody



Mouse brain was stained with anti-EGR1 rabbit antibody