

## eIF4B Rabbit mAb (AR1452)

### Key Features

Host Species:	Rabbit
Reactivity:	Human
Applications:	WB,IHC,IF,IP,ELISA
Isotype:	IgG,Kappa
MW:	69kD (Calculated) 80kD (Observed)

### Recommended Dilution Ratios

IHC:	1:200-1000
WB:	1:2000-10000
IF:	1:200-1000
ELISA:	1:5000-20000
IP:	1:50-200

### Storage

-15°C to -25°C/1 year (Do not lower than -25°C)

### Basic Information

Clonality	Monoclonal
-----------	------------

### Immunogen Information

Specificity	Endogenous
-------------	------------

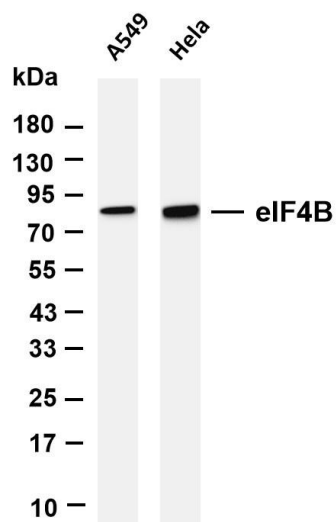
### Target Information

Gene name	EIF4B
Protein Name	Eif4b

Organism	Gene ID	UniProt ID
Human	1975	P23588
Mouse	75705	Q8BGD9

Cellular Localization	cytosol, polysome, eukaryotic translation initiation factor 4F complex, dendrite, neuronal cell body
Tissue specificity	Adipose tissue, Brain, Cervix carcinoma, Epithelium, Liver, Lung

## Validation Data



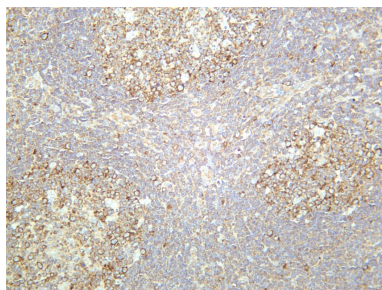
Various whole cell lysates were separated by 4-20% SDS-PAGE, and the membrane was blotted with anti-eIF4B antibody. The HRP-conjugated Goat anti-Rabbit IgG(H + L) antibody was used to detect the antibody.

Lane 1: A549

Lane 2: HeLa

Predicted band size: 69kDa

Observed band size: 80kDa



Human tonsil was stained with anti-eIF4B rabbit antibody

For Research Use Only