

## eIF4E Rabbit mAb (AR1453)

### Key Features

Host Species:	Rabbit
Reactivity:	Human, Mouse, Rat
Applications:	WB, IHC, IF, IP, ELISA
Isotype:	IgG, Kappa
MW:	25kD (Calculated) 25kD (Observed)

### Recommended Dilution Ratios

IHC:	1:200-1000
WB:	1:2000-10000
IF:	1:200-1000
ELISA:	1:5000-20000
IP:	1:50-200

### Storage

-15°C to -25°C/1 year (Do not lower than -25°C)

### Basic Information

Clonality	Monoclonal
-----------	------------

### Immunogen Information

Specificity	Endogenous
-------------	------------

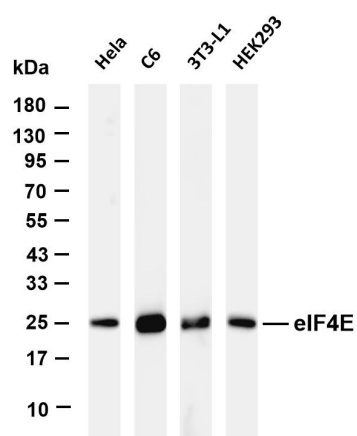
### Target Information

Gene name	EIF4E
Protein Name	Eukaryotic translation initiation factor 4E

Organism	Gene ID	UniProt ID
Human	1977	P06730
Mouse	13684	P63073
Rat	117045	P63074

Cellular Localization	Cytoplasm, Nucleus
Tissue specificity	Brain, Fetal brain, Placenta, Pooled, Small intestine, Testis,

## Validation Data



Various whole cell lysates were separated by 4-20% SDS-PAGE, and the membrane was blotted with anti-eIF4E antibody. The HRP-conjugated Goat anti-Rabbit IgG(H + L) antibody was used to detect the antibody.

Lane 1: HeLa

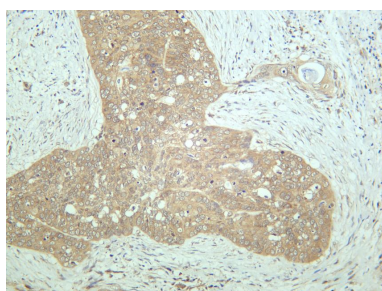
Lane 2: C6

Lane 3: 3T3-L1

Lane 4: HEK293

Predicted band size: 25kDa

Observed band size: 25kDa



Human cervical carcinoma was stained with anti-eIF4E rabbit antibody

For Research Use Only