

Endoplasmin Rabbit mAb (AR1455)

Key Features

Host Species:	Rabbit
Reactivity:	Human, Mouse, Rat
Applications:	WB, IHC, IF, IP, ELISA
Isotype:	IgG, Kappa
MW:	92kD (Calculated) 100kD (Observed)

Recommended Dilution Ratios

IHC:	1:1000-1:5000
WB:	1:2000-10000
IF:	1:200-1000
ELISA:	1:5000-20000
IP:	1:50-200

Storage

-15°C to -25°C/1 year (Do not lower than -25°C)

Basic Information

Clonality	Monoclonal
-----------	------------

Immunogen Information

Specificity	Endogenous
-------------	------------

Target Information

Gene name	HSP90B1
-----------	---------

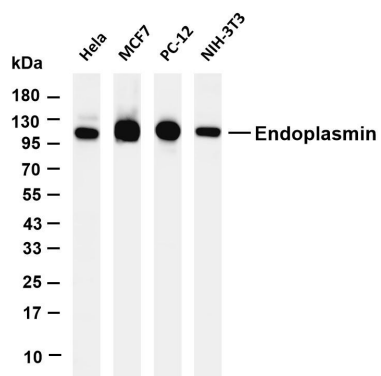
Protein Name	Endoplasmin
--------------	-------------

Organism	Gene ID	UniProt ID
Human	7184	P14625
Mouse	22027	P08113

Cellular Localization	Endoplasmic reticulum
-----------------------	-----------------------

Tissue specificity	Blood, Brain, Liver, Lung, Platelet, Skin
--------------------	-------------------------------------------

Validation Data



Various whole cell lysates were separated by 4-20% SDS-PAGE, and the membrane was blotted with anti-Endoplasmin antibody. The HRP-conjugated Goat anti-Rabbit IgG(H + L) antibody was used to detect the antibody.

Lane 1: HeLa

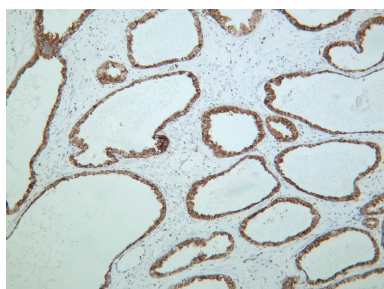
Lane 2: MCF7

Lane 3: PC-12

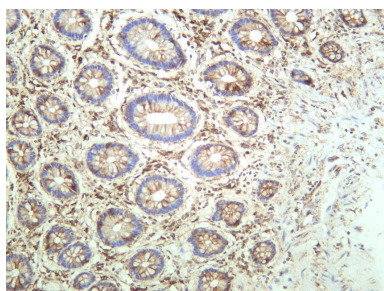
Lane 4: NIH-3T3

Predicted band size: 92kDa

Observed band size: 100kDa



Human prostate was stained with anti-Endoplasmin rabbit antibody



Human colon was stained with anti-Endoplasmin rabbit antibody

For Research Use Only