

ERG Rabbit mAb (AR1456)

Key Features

Host Species:	Rabbit
Reactivity:	Human, Mouse, Rat
Applications:	WB, IHC, IF, IP, ELISA
Isotype:	IgG, Kappa
MW:	55kD (Calculated) 55kD (Observed)

Recommended Dilution Ratios

IHC:	1:100-1:500
WB:	1:2000-10000
IF:	1:200-1000
ELISA:	1:5000-20000
IP:	1:50-200

Storage

-15°C to -25°C/1 year (Do not lower than -25°C)

Basic Information

Clonality	Monoclonal
-----------	------------

Immunogen Information

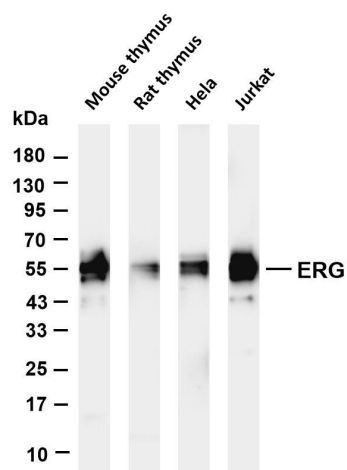
Specificity	Endogenous
-------------	------------

Target Information

Gene name	ERG
Protein Name	Transcriptional regulator ERG (Transforming protein ERG)

	Organism	Gene ID	UniProt ID
	Human	2078	P11308
	Mouse	13876	P81270
Cellular Localization	Nucleus		

Validation Data



Various whole cell lysates were separated by 4-20% SDS-PAGE, and the membrane was blotted with anti-ERG antibody. The HRP-conjugated Goat anti-Rabbit IgG(H + L) antibody was used to detect the antibody.

Lane 1: Mouse thymus

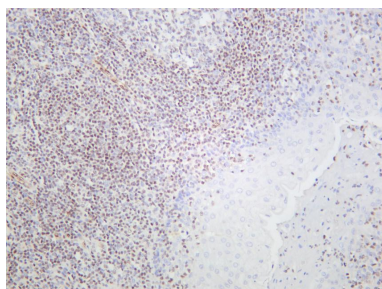
Lane 2: Rat thymus

Lane 3: HeLa

Lane 4: Jurkat

Predicted band size: 55kDa

Observed band size: 55kDa



Human tonsil was stained with anti-ERG rabbit antibody

For Research Use Only