

ELNE Rabbit mAb (AR1454)

Key Features

Host Species:	Rabbit
Reactivity:	Human
Applications:	WB, IF,IP,ELISA
Isotype:	IgG,Kappa
MW:	29kD (Calculated) 29kD (Observed)

Recommended Dilution Ratios

WB:	1:2000-10000
IF:	1:200-1000
ELISA:	1:5000-20000
IP:	1:50-200

Storage

-15°C to -25°C/1 year (Do not lower than -25°C)

Basic Information

Clonality	Monoclonal
-----------	------------

Immunogen Information

Specificity	Endogenous
-------------	------------

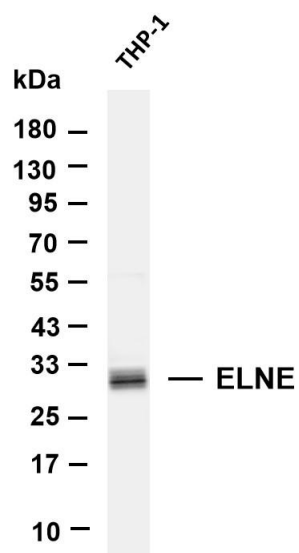
Target Information

Gene name	ELANE ELA2
Protein Name	Neutrophil elastase (Bone marrow serine protease) (Elastase-2) (Human leukocyte elastase) (HLE) (Medullasin) (PMN elastase)

Organism	Gene ID	UniProt ID
Human	1991	P08246
Mouse		Q3UP87

Cellular Localization	Cytoplasmic vesicle, phagosome. Localized in phagolysosomes following ingestion of E.coli by neutrophils.
Tissue specificity	Bone marrow cells. Neutrophil (PubMed:10947984).

Validation Data



Various whole cell lysates were separated by 4-20% SDS-PAGE, and the membrane was blotted with anti-ELNE antibody. The HRP-conjugated Goat anti-Rabbit IgG (H + L) antibody was used to detect the antibody.

Lane 1: THP-1

Predicted band size: 29kDa

Observed band size: 29kDa

For Research Use Only