

EZH2 Rabbit mAb (AR1457)

Key Features

Host Species:	Rabbit
Reactivity:	Human, Mouse, Rat
Applications:	WB, IHC, IF, IP, ELISA
Isotype:	IgG, Kappa
MW:	85kD (Calculated) 85kD (Observed)

Recommended Dilution Ratios

IHC:	1:500-1:1000
WB:	1:2000-10000
IF:	1:200-1000
ELISA:	1:5000-20000
IP:	1:50-200

Storage

-15°C to -25°C/1 year (Do not lower than -25°C)

Basic Information

Clonality	Monoclonal
-----------	------------

Immunogen Information

Specificity	Endogenous
-------------	------------

Target Information

Gene name	EZH2 KMT6
Protein Name	Histone-lysine N-methyltransferase EZH2 (ENX-1) (Enhancer of zeste homolog 2) (Lysine N-methyltransferase 6)

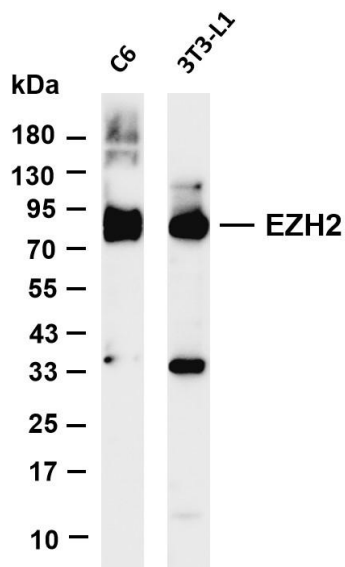
Organism	Gene ID	UniProt ID
Human	2146	Q15910
Mouse		Q61188

Cellular Localization	Nucleus
-----------------------	---------

Tissue specificity	In the ovary, expressed in primordial follicles and oocytes and also in external follicle cells (at protein level) (PubMed:31451685). Expressed in many tissues (PubMed:14532106). Overexpressed in
--------------------	---

numerous tumor types including carcinomas of the breast, colon, larynx, lymphoma and testis (PubMed:14532106).

Validation Data



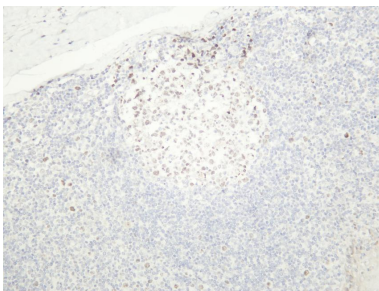
Various whole cell lysates were separated by 4-20% SDS-PAGE, and the membrane was blotted with anti-EZH2 antibody. The HRP-conjugated Goat anti-Rabbit IgG(H + L) antibody was used to detect the antibody.

Lane 1: C6

Lane 2: 3T3-L1

Predicted band size: 85kDa

Observed band size: 85kDa



Human tonsil was stained with anti-EZH2 rabbit antibody

For Research Use Only