

FAM111A Rabbit mAb (AR1458)

Key Features

Host Species:	Rabbit
Reactivity:	Human
Applications:	WB,IHC,IF,ICC
Isotype:	IgG,Kappa
MW:	70kD (Calculated) 67kD (Observed)

Recommended Dilution Ratios

WB:	1:1000-5000
IHC:	1:100-300
ICC/IF:	1:100-300

Storage

-15°C to -25°C/1 year (Do not lower than -25°C)

Basic Information

Clonality	Monoclonal
-----------	------------

Immunogen Information

Specificity	Endogenous
-------------	------------

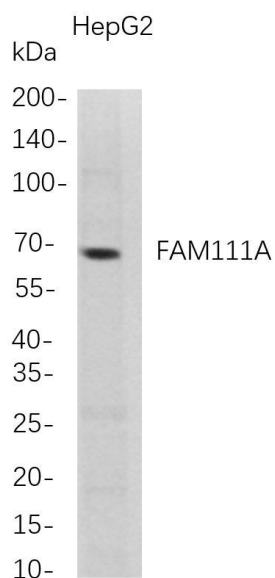
Target Information

Gene name	FAM111A; KIAA1895
Protein Name	Serine protease FAM111A

Organism	Gene ID	UniProt ID
Human	63901	Q96PZ2
Mouse	107373	Q9D2L9

Cellular Localization	Nucleus. Chromosome. Cytoplasm. Note=Mainly localizes to nucleus: colocalizes with PCNA on replication sites.
-----------------------	---------------------------------------------------------------------------------------------------------------

Validation Data



Western Blot analysis of HepG2 whole cell lysates were separated by 4-20% SDS-PAGE, and the membrane was blotted with anti-FAM111A rabbit mAb. The HRP-conjugated Goat anti-Rabbit IgG(H + L) antibody was used to detect the antibody.

Lane 1: HepG2

Predicted band size: 70kDa

Observed band size: 67kDa

For Research Use Only