

Flotillin-1 Rabbit mAb (AR1461)

Key Features

Host Species:	Rabbit
Reactivity:	Human, Mouse, Rat
Applications:	WB, IHC, IF, IP, ELISA
Isotype:	IgG, Kappa
MW:	47kD (Calculated) 47kD (Observed)

Recommended Dilution Ratios

IHC:	1:500-2000
WB:	1:2000-10000
IF:	1:200-1000
ELISA:	1:5000-20000
IP:	1:50-200

Storage

-15°C to -25°C/1 year (Do not lower than -25°C)

Basic Information

Clonality	Monoclonal
-----------	------------

Immunogen Information

Specificity	Endogenous
-------------	------------

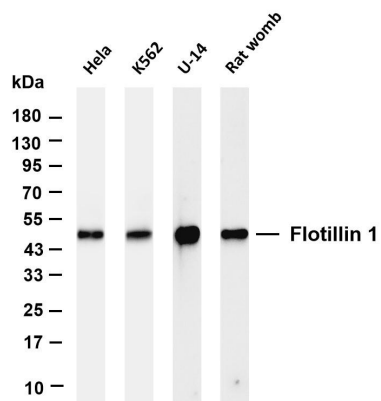
Target Information

Gene name	FLOT1
Protein Name	Flotillin-1

Organism	Gene ID	UniProt ID
Human	10211	O75955

Cellular Localization	Membrane
Tissue specificity	Adipose tissue, Adrenal gland, Lung, Peripheral blood leukocyte, Umbilical cord blood

Validation Data



Various whole cell lysates were separated by 4-20% SDS-PAGE, and the membrane was blotted with anti-Flotillin-1 antibody. The HRP-conjugated Goat anti-Rabbit IgG(H + L) antibody was used to detect the antibody.

Lane 1: HeLa

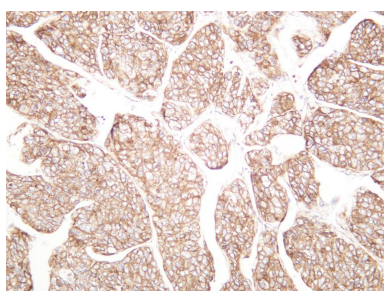
Lane 2: K562

Lane 3: U-14

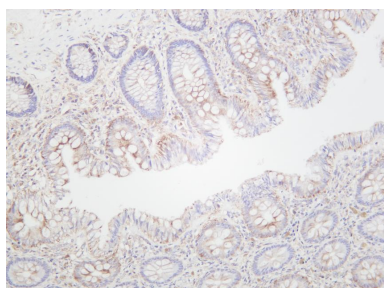
Lane 4: Rat womb

Predicted band size: 47kDa

Observed band size: 47kDa



Human hepatocellular carcinoma was stained with anti-Flotillin-1 rabbit antibody



Human colon was stained with anti-Flotillin-1 rabbit antibody

For Research Use Only