

FAM160A2 Rabbit mAb (AR1459)

Key Features

Host Species:	Rabbit
Reactivity:	Human
Applications:	WB
Isotype:	IgG,Kappa
MW:	106kD (Calculated) 106kD (Observed)

Recommended Dilution Ratios

WB:	1:1000-5000
-----	-------------

Storage

-15°C to -25°C/1 year (Do not lower than -25°C)

Basic Information

Clonality	Monoclonal
-----------	------------

Immunogen Information

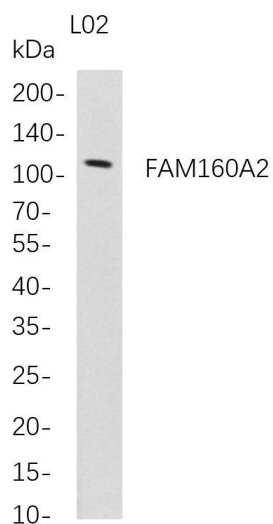
Specificity	Endogenous
-------------	------------

Target Information

Gene name	FHIP1B; C11orf56; FAM160A2; KIAA1759
Protein Name	FHF complex subunit HOOK-interacting protein 1B; FHIP1B; FTS- and Hook-interacting protein; FHIP;

Organism	Gene ID	UniProt ID
Human	84067	Q8N612
Mouse	74349	Q3U2I3
Rat	293343	Q66H54

Validation Data



Western Blot analysis of L02 whole cell lysates were separated by 4-20% SDS-PAGE, and the membrane was blotted with anti-FAM160A2 rabbit mAb. The HRP-conjugated Goat anti-Rabbit IgG(H + L) antibody was used to detect the antibody.

Lane 1: L02

Predicted band size: 106kDa

Observed band size: 106kDa

For Research Use Only