

## FOXP1 Rabbit mAb (AR1462)

### Key Features

Host Species:	Rabbit
Reactivity:	Human, Mouse, Rat
Applications:	WB, IHC, IF, IP, ELISA
Isotype:	IgG, Kappa
MW:	75kD (Calculated) 82-90 kD (Observed)

### Recommended Dilution Ratios

IHC:	1:1000-4000
WB:	1:2000-10000
IF:	1:200-1000
ELISA:	1:5000-20000
IP:	1:50-200

### Storage

-15°C to -25°C/1 year (Do not lower than -25°C)

### Basic Information

Clonality	Monoclonal
-----------	------------

### Immunogen Information

Specificity	Endogenous
-------------	------------

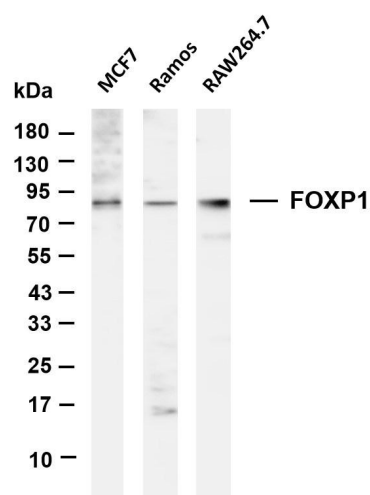
### Target Information

Gene name	FOXP1
Protein Name	Forkhead box protein P1

Organism	Gene ID	UniProt ID
Human	27086	Q9H334
Mouse	108655	P58462
Rat	297480	Q498D1

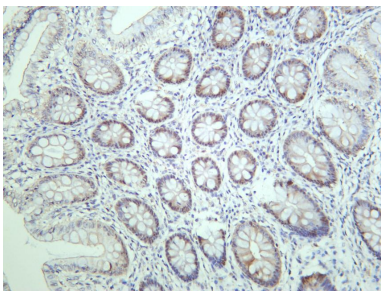
Cellular Localization	Nucleus. Not found in the nucleolus.
Tissue specificity	Isoform 8 is specifically expressed in embryonic stem cells.

# Validation Data



Various whole cell lysates were separated by 4-20% SDS-PAGE, and the membrane was blotted with anti-FOXP1 antibody. The HRP-conjugated Goat anti-Rabbit IgG(H + L) antibody was used to detect the antibody.

Lane 1: MCF7  
Lane 2: Ramos  
Lane 3: RAW264.7  
Predicted band size: 75kDa  
Observed band size: 82-90kDa



Human colon was stained with anti-FOXP1 rabbit antibody

For Research Use Only