

GCLC Rabbit mAb (AR1463)

Key Features

Host Species:	Rabbit
Reactivity:	Human,Mouse,Rat
Applications:	WB, IF,IP,ELISA
Isotype:	IgG,Kappa
MW:	73kD (Calculated) 73kD (Observed)

Recommended Dilution Ratios

WB:	1:2000-10000
IF:	1:200-1000
ELISA:	1:5000-20000
IP:	1:50-200

Storage

-15°C to -25°C/1 year (Do not lower than -25°C)

Basic Information

Clonality	Monoclonal
-----------	------------

Immunogen Information

Specificity	Endogenous
-------------	------------

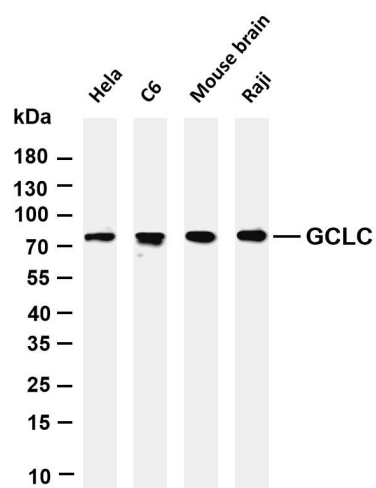
Target Information

Gene name	GCLC
Protein Name	Glutamate--cysteine ligase catalytic subunit

Organism	Gene ID	UniProt ID
Human	2729	P48506
Mouse	14629	P97494
Rat	25283	P19468

Cellular Localization	Cytoplasm
Tissue specificity	Foreskin fibroblast, Hippocampus, Liver, Testis, Thalamus

Validation Data



Various whole cell lysates were separated by 4-20% SDS-PAGE, and the membrane was blotted with anti-GCLC antibody. The HRP-conjugated Goat anti-Rabbit IgG(H + L) antibody was used to detect the antibody.

Lane 1: HeLa

Lane 2: C6

Lane 3: Mouse brain

Lane 4: Raji

Predicted band size: 73kDa

Observed band size: 73kDa

For Research Use Only