

Glutamate Receptor 1 Rabbit mAb (AR1464)

Key Features

Host Species:	Rabbit
Reactivity:	Human,Mouse,Rat
Applications:	WB,IHC,IF,IP,ELISA
Isotype:	IgG,Kappa
MW:	101kD (Calculated) 101kD (Observed)

Recommended Dilution Ratios

IHC:	1:200-1000
WB:	1:1000-5000
IF:	1:200-1000
ELISA:	1:5000-20000
IP:	1:50-200

Storage

-15°C to -25°C/1 year (Do not lower than -25°C)

Basic Information

Clonality	Monoclonal
-----------	------------

Immunogen Information

Specificity	Endogenous
-------------	------------

Target Information

Gene name	GRIA1
Protein Name	Glutamate receptor 1

Organism	Gene ID	UniProt ID
Human	2890	P42261
Mouse	14799	P23818
Rat	50592	P19490

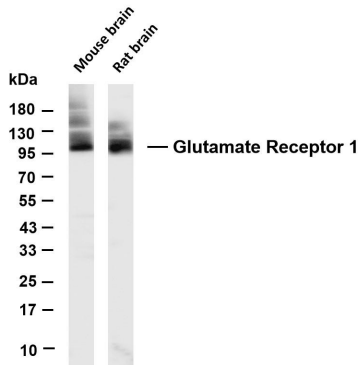
Cellular Localization	Cell membrane; Multi-pass membrane protein. Endoplasmic reticulum membrane; Cell junction, synapse, postsynaptic cell membrane; Cell junction, synapse, postsynaptic density membrane; Cell projection, dendrite. Cell projection, dendritic spine. Early
-----------------------	---

endosome membrane; Recycling endosome membrane; Cell junction, synapse, presynapse. Cell junction, synapse. Interaction with CACNG2, CNIH2 and CNIH3 promotes cell surface expression. Colocalizes with PDLIM4 in early endosomes. Displays a somatodendritic localization and is excluded from axons in neurons (By similarity). Localized to cone photoreceptor pedicles (By similarity).

Tissue specificity

Widely expressed in brain.

Validation Data



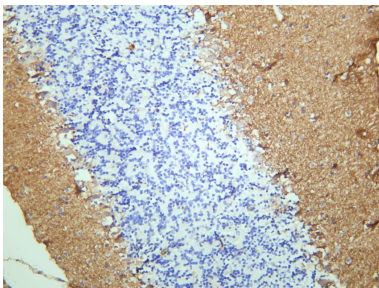
Various whole cell lysates were separated by 4-20% SDS-PAGE, and the membrane was blotted with anti-Glutamate Receptor 1 antibody. The HRP-conjugated Goat anti-Rabbit IgG(H + L) antibody was used to detect the antibody.

Lane 1: Mouse brain

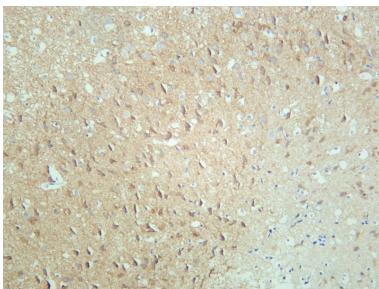
Lane 2: Rat brain

Predicted band size: 101kDa

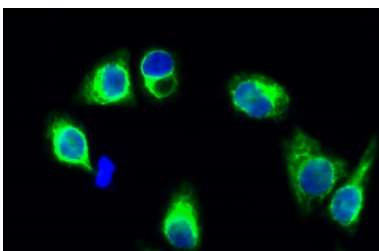
Observed band size: 101kDa



Rat brain was stained with anti-Glutamate Receptor 1 rabbit antibody



Mouse brain was stained with anti-Glutamate Receptor 1 rabbit antibody



Immunofluorescence analysis of HeLa cell.

1. GluR-1 Monoclonal Antibody(green) was diluted at 1:200(4 ° overnight).
2. Goat Anti Rabbit Alexa Fluor 488 was diluted at 1:1000(room temperature, 50min).
3. DAPI (blue) 10min.