

Granzyme B Rabbit mAb (AR1467)

Key Features

Host Species:	Rabbit
Reactivity:	Human
Applications:	WB, IHC,IF,IP,ELISA
Isotype:	IgG,Kappa
MW:	28kD (Calculated) 37kD (Observed)

Recommended Dilution Ratios

IHC:	1:1000-4000
WB:	1:2000-10000
IF:	1:200-1000
ELISA:	1:5000-20000
IP:	1:50-200

Storage

-15°C to -25°C/1 year (Do not lower than -25°C)

Basic Information

Clonality	Monoclonal
-----------	------------

Immunogen Information

Specificity	Endogenous
-------------	------------

Target Information

Gene name	GZMB CGL1 CSPB CTLA1 GRB
Protein Name	Granzyme B (C11) (CTLA-1) (Cathepsin G-like 1) (CTSG1) (Cytotoxic T-lymphocyte proteinase 2) (Lymphocyte protease) (Fragmentin-2) (Granzyme-2) (Human lymphocyte protein) (HLP) (SECT) (T-cell serine protease 1-3E)

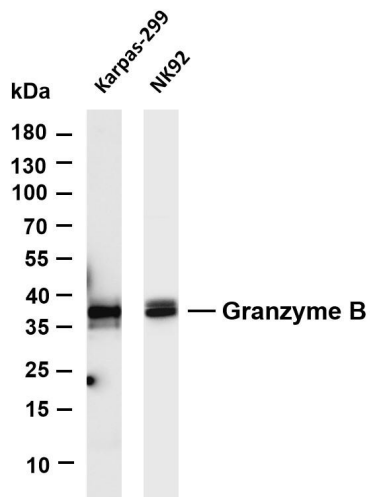
Organism	Gene ID	UniProt ID
Human	3002	P10144
Mouse	14939	P04187
Rat	171528	P18291

Cellular Localization	Lysosome
-----------------------	----------

Tissue specificity

Breast carcinoma, Large granular lymphocyte leukemia, Pancreas,

Validation Data



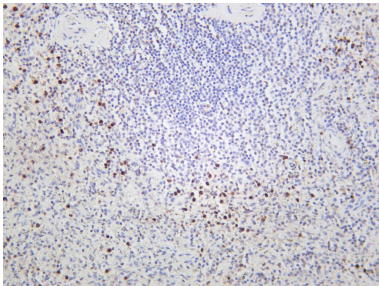
Various whole cell lysates were separated by 4-20% SDS-PAGE, and the membrane was blotted with anti-Granzyme B antibody. The HRP-conjugated Goat anti-Rabbit IgG(H + L) antibody was used to detect the antibody.

Lane 1: Karpas-299

Lane 2: NK92

Predicted band size: 28kDa

Observed band size: 37kDa



Human spleen was stained with anti-Granzyme B rabbit antibody

For Research Use Only