

HES1 Rabbit mAb (AR1471)

Key Features

Host Species:	Rabbit
Reactivity:	Human,Mouse,Rat
Applications:	WB,IHC,IF,IP,ELISA
Isotype:	IgG,Kappa
MW:	30kD (Calculated) 30kD (Observed)

Recommended Dilution Ratios

IHC:	1:4000-20000
WB:	1:2000-10000
IF:	1:200-1000
ELISA:	1:5000-20000
IP:	1:50-100

Storage

-15°C to -25°C/1 year (Do not lower than -25°C)

Basic Information

Clonality	Monoclonal
-----------	------------

Immunogen Information

Specificity	Endogenous
-------------	------------

Target Information

Gene name	HES1 BHLHB39 HL HRY
Protein Name	Transcription factor HES-1 (Class B basic helix-loop-helix protein 39) (bHLHb39) (Hairy and enhancer of split 1) (Hairy homolog) (Hairy-like protein) (hHL)

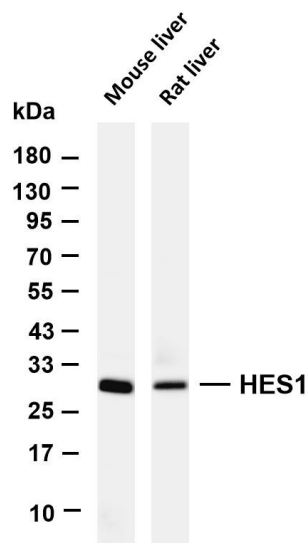
Organism	Gene ID	UniProt ID
Human	3280	Q14469
Mouse		P35428
Rat		Q04666

Cellular Localization	Nucleus.
-----------------------	----------

Tissue specificity

Kidney, Prostate, Skin

Validation Data



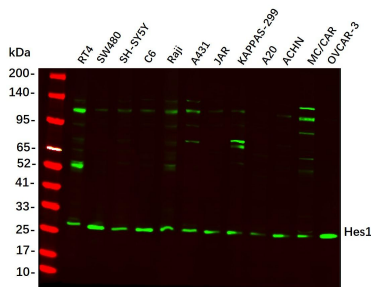
Various whole cell lysates were separated by 4-20% SDS-PAGE, and the membrane was blotted with anti-HES1 antibody. The HRP-conjugated Goat anti-Rabbit IgG (H + L) antibody was used to detect the antibody.

Lane 1: Mouse liver

Lane 2: Rat liver

Predicted band size: 30kDa

Observed band size: 30kDa



Western Blot analysis using various cell lysate, Proteins were separated by 4-20% SDS-PAGE, and the membrane was blotted with Hes1 Rabbit mAb diluted at 1:2000. Secondary: Dylight 800, Goat Anti Rabbit IgG(1:10000)

For Research Use Only