

HDAC6 Rabbit mAb (AR1469)

Key Features

Host Species:	Rabbit
Reactivity:	Human, Mouse, Rat
Applications:	WB, IHC, IF, IP, ELISA
Isotype:	IgG, Kappa
MW:	131kD (Calculated) 160kD (Observed)

Recommended Dilution Ratios

IHC:	1:2000-10000
WB:	1:2000-10000
IF:	1:200-1000
ELISA:	1:5000-20000
IP:	1:50-200

Storage

-15°C to -25°C/1 year (Do not lower than -25°C)

Basic Information

Clonality	Monoclonal
-----------	------------

Immunogen Information

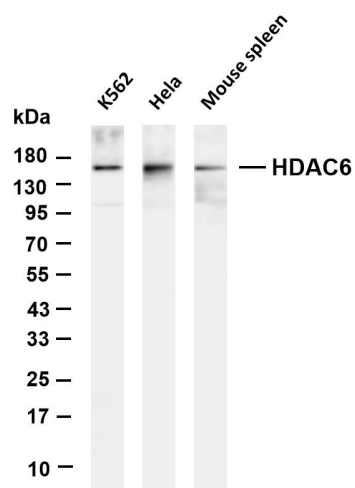
Specificity	Endogenous
-------------	------------

Target Information

Gene name	HDAC6
Protein Name	Histone deacetylase 6

	Organism	Gene ID	UniProt ID
	Human	10013	Q9UBN7
	Mouse	15185	Q9Z2V5
Cellular Localization	Cytoplasm. Cytoplasm, cytoskeleton. Nucleus. Perikaryon. Cell projection, dendrite. Cell projection, axon. It is mainly cytoplasmic, where it is associated with microtubules.		
Tissue specificity	Brain, Epithelium, Kidney, Muscle, Ovary, Placenta		

Validation Data



Various whole cell lysates were separated by 4-20% SDS-PAGE, and the membrane was blotted with anti-HDAC6 antibody. The HRP-conjugated Goat anti-Rabbit IgG(H + L) antibody was used to detect the antibody.

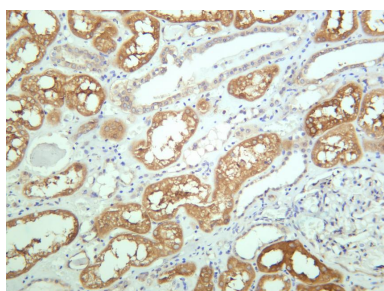
Lane 1: K562

Lane 2: HeLa

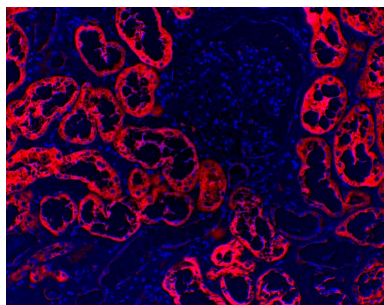
Lane 3: Mouse spleen

Predicted band size: 131kDa

Observed band size: 160kDa



Human kidney was stained with anti-HDAC6 rabbit antibody



Immunofluorescence analysis of Human kidney

For Research Use Only