

IFT88 Rabbit mAb (AR1475)

Key Features

| | |
|---------------|--------------------------------------|
| Host Species: | Rabbit |
| Reactivity: | Human,Mouse,Rat |
| Applications: | WB,IF,IP,ELISA |
| Isotype: | IgG,Kappa |
| MW: | 93kD (Calculated) 93kD (Observed) |

Recommended Dilution Ratios

| | |
|--------|--------------|
| WB: | 1:2000-10000 |
| IF: | 1:200-1000 |
| ELISA: | 1:5000-20000 |
| IP: | 1:50-100 |

Storage

-15°C to -25°C/1 year (Do not lower than -25°C)

Basic Information

| | |
|-----------|------------|
| Clonality | Monoclonal |
|-----------|------------|

Immunogen Information

| | |
|-------------|------------|
| Specificity | Endogenous |
|-------------|------------|

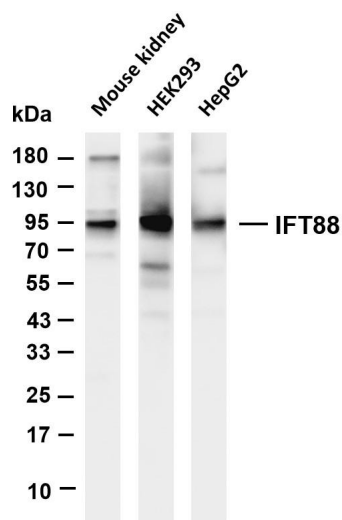
Target Information

| | |
|--------------|---|
| Gene name | IFT88 TG737 TTC10 |
| Protein Name | Intraflagellar transport protein 88 homolog (Recessive polycystic kidney disease protein Tg737 homolog) (Tetratricopeptide repeat protein 10) (TPR repeat protein 10) |

| Organism | Gene ID | UniProt ID |
|----------|---------|------------|
| Human | 8100 | Q13099 |
| Mouse | 21821 | Q61371 |

| | |
|-----------------------|---|
| Cellular Localization | Cytoplasm |
| Tissue specificity | Expressed in the heart, brain, liver, lung, kidney, skeletal muscle and pancreas. |

Validation Data



Various whole cell lysates were separated by 4-20% SDS-PAGE, and the membrane was blotted with anti-IFT88 antibody. The HRP-conjugated Goat anti-Rabbit IgG(H + L) antibody was used to detect the antibody.

Lane 1: Mouse kidney

Lane 2: HEK293

Lane 3: HepG2

Predicted band size: 93kDa

Observed band size: 93kDa

For Research Use Only