

## IL-1 $\beta$ Rabbit mAb (AR1477)

### Key Features

Host Species:	Rabbit
Reactivity:	Mouse,Rat
Applications:	WB,IF,IP,ELISA
Isotype:	IgG,Kappa
MW:	31kD (Calculated) 33kD (Observed)

### Recommended Dilution Ratios

WB:	1:2000-10000
IF:	1:200-1000
ELISA:	1:5000-20000
IP:	1:50-100

### Storage

-15°C to -25°C/1 year (Do not lower than -25°C)

### Basic Information

Clonality	Monoclonal
-----------	------------

### Immunogen Information

Specificity	Endogenous
-------------	------------

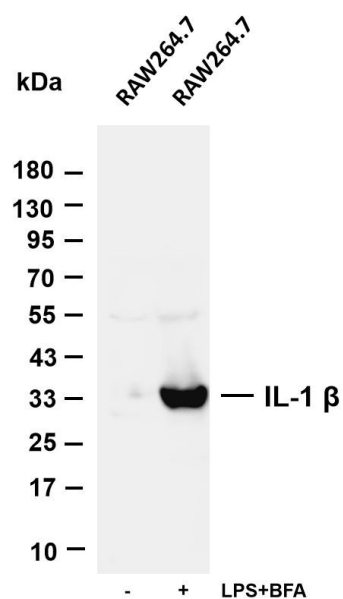
### Target Information

Gene name	IL1B IL1F2
Protein Name	Interleukin-1 beta (IL-1 beta) (Catabolin)

Organism	Gene ID	UniProt ID
Human	3553	P01584
Mouse	16176	P10749
Rat		Q63264

Cellular Localization	Secreted
Tissue specificity	Expressed in activated monocytes/macrophages (at protein level).

## Validation Data



Various whole cell lysates were separated by 4-20% SDS-PAGE, and the membrane was blotted with anti-IL-1  $\beta$  antibody. The HRP-conjugated Goat anti-Rabbit IgG(H + L) antibody was used to detect the antibody.

Lane 1: RAW264.7

Lane 2: RAW264.7 was treated with Lipopolysaccharide (0.1  $\mu$ g/mL) for 4 hours and then treated with Brefeldin A (1  $\mu$ g/ml) for 3 hours

Predicted band size: 31kDa

Observed band size: 33kDa

For Research Use Only