

LRMP Rabbit mAb (AR1479)

Key Features

Host Species:	Rabbit
Reactivity:	Human
Applications:	WB,IHC,IF,ICC,Flow Cyt
Isotype:	IgG,Kappa
MW:	62kD (Calculated) 70kD (Observed)

Recommended Dilution Ratios

WB:	1:1000-5000
IHC:	1:100-300
ICC/IF:	1:100-300
FC:	1:100-300

Storage

-15°C to -25°C/1 year (Do not lower than -25°C)

Basic Information

Clonality	Monoclonal
-----------	------------

Immunogen Information

Specificity	Endogenous
-------------	------------

Target Information

Gene name	IRAG2; JAW1; LRMP
-----------	-------------------

Protein Name	Inositol 1,4,5-triphosphate receptor associated 2; Lymphoid-restricted membrane protein; Protein Jaw1; [Cleaved into: Processed inositol 1,4,5-triphosphate receptor associated 2]
--------------	--

Organism	Gene ID	UniProt ID
Human	4033	Q12912
Mouse		Q60664

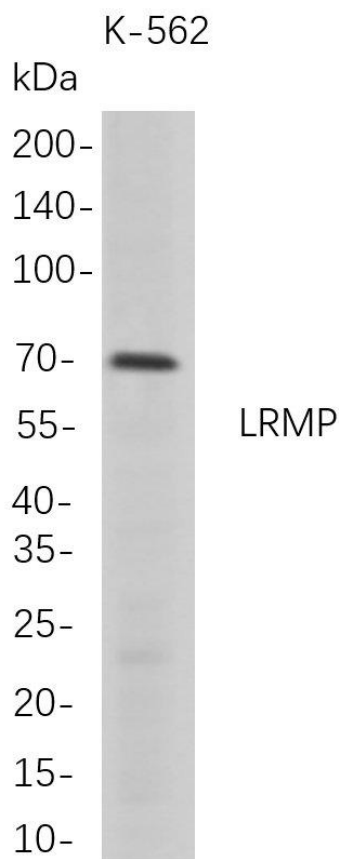
Cellular Localization	[Processed inositol 1,4,5-triphosphate receptor associated 2]: Cytoplasm.; Endoplasmic reticulum membrane; Single-pass type IV membrane protein. Nucleus envelope. Cytoplasm, cytoskeleton, microtubule organizing center, centrosome. Cytoplasm, cytoskeleton, spindle pole. Chromosome. Note=Colocalized with
-----------------------	---

ITPR3 on the endoplasmic reticulum membrane.

Expressed at high levels in preB-cells, mature B-cells and preT-cells. Expressed at low levels in mature T-cells and plasma B-cells. Expressed in germinal center B-cells, splenic marginal zone cells and B-cell lymphomas. Expressed in neuronal cells in the cerebral cortex, epithelial cells in tonsil, adrenal glands, zymogen-producing cells in the stomach and epithelial cells in seminal vesicles. {ECO:0000269|PubMed:16739114, ECO:0000269|PubMed:8021504}.

Tissue specificity

Validation Data



Western Blot analysis of K-562 whole cell lysates were separated by 4-20% SDS-PAGE, and the membrane was blotted with anti-LRMP rabbit mAb. The HRP-conjugated Goat anti-Rabbit IgG(H + L) antibody was used to detect the antibody.

Lane 1: K-562

Predicted band size: 62kDa

Observed band size: 70kDa

For Research Use Only