

IRF-1 Rabbit mAb (AR1480)

Key Features

Host Species:	Rabbit
Reactivity:	Human, Mouse, Rat
Applications:	WB, IHC, IF, IP, ELISA
Isotype:	IgG, Kappa
MW:	37kD (Calculated) 48kD (Observed)

Recommended Dilution Ratios

IHC:	1:100-400
WB:	1:500-2000
IF:	1:200-1000
ELISA:	1:5000-20000
IP:	1:50-200

Storage

-15°C to -25°C/1 year (Do not lower than -25°C)

Basic Information

Clonality	Monoclonal
-----------	------------

Immunogen Information

Specificity	Endogenous
-------------	------------

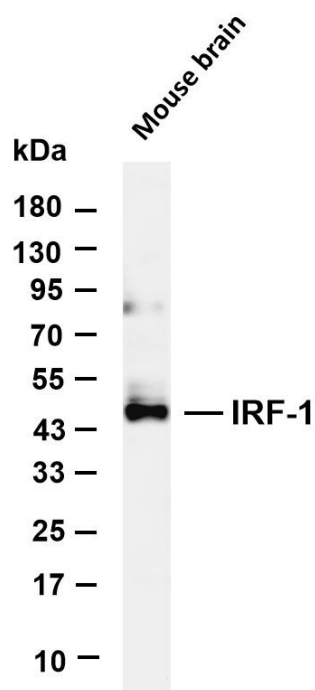
Target Information

Gene name	IRF1
Protein Name	Interferon regulatory factor 1

Organism	Gene ID	UniProt ID
Human	3659	P10914
Mouse	16362	P15314
Rat	24508	P23570

Cellular Localization	Nucleus. Cytoplasm. MYD88-associated IRF1 migrates into the nucleus more efficiently than non-MYD88-associated IRF1.
Tissue specificity	Pancreas, Placenta, Spleen

Validation Data

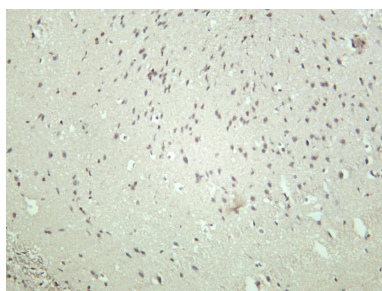


Various whole cell lysates were separated by 4-20% SDS-PAGE, and the membrane was blotted with anti-IRF-1 antibody. The HRP-conjugated Goat anti-Rabbit IgG (H + L) antibody was used to detect the antibody.

Lane 1: Mouse brain

Predicted band size: 37kDa

Observed band size: 48kDa



Rat brain was stained with anti-IRF-1 rabbit antibody

For Research Use Only