

IRS-1 Rabbit mAb (AR1481)

Key Features

| | |
|---------------|--|
| Host Species: | Rabbit |
| Reactivity: | Human,Mouse,Rat |
| Applications: | WB,IHC,IF,IP,ELISA |
| Isotype: | IgG,Kappa |
| MW: | 132kD (Calculated) 180kD (Observed) |

Recommended Dilution Ratios

| | |
|--------|--------------|
| IHC: | 1:400-1000 |
| WB: | 1:2000-10000 |
| IF: | 1:200-1000 |
| ELISA: | 1:5000-20000 |
| IP: | 1:50-200 |

Storage

-15°C to -25°C/1 year (Do not lower than -25°C)

Basic Information

| | |
|-----------|------------|
| Clonality | Monoclonal |
|-----------|------------|

Immunogen Information

| | |
|-------------|------------|
| Specificity | Endogenous |
|-------------|------------|

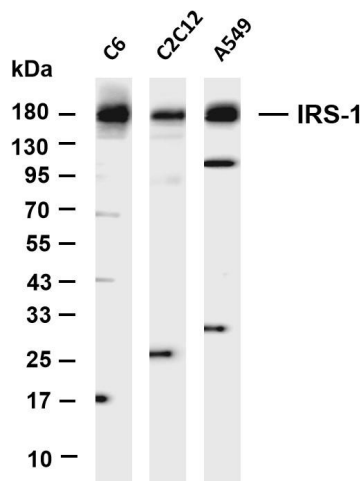
Target Information

| | |
|--------------|------------------------------|
| Gene name | IRS1 |
| Protein Name | Insulin receptor substrate 1 |

| Organism | Gene ID | UniProt ID |
|----------|---------|------------|
| Human | 3667 | P35568 |
| Mouse | 16367 | P35569 |
| Rat | 25467 | P35570 |

| | |
|-----------------------|---|
| Cellular Localization | nucleus, cytoplasm, cytosol, plasma membrane, insulin receptor complex, caveola, intracellular membrane-bounded organelle |
| Tissue specificity | Epithelium, Eye, Skeletal muscle |

Validation Data



Various whole cell lysates were separated by 4-20% SDS-PAGE, and the membrane was blotted with anti-IRS-1 antibody. The HRP-conjugated Goat anti-Rabbit IgG(H + L) antibody was used to detect the antibody.

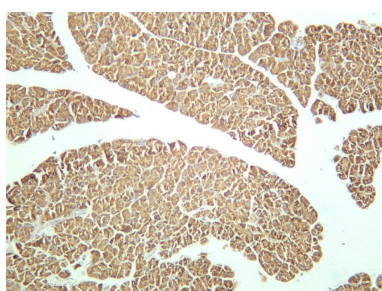
Lane 1: C6

Lane 2: C2C12

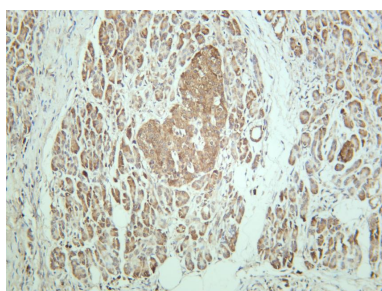
Lane 3: A549

Predicted band size: 132kDa

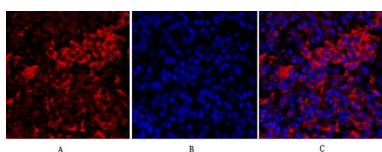
Observed band size: 180kDa



Rat pancreas was stained with anti-IRS-1 rabbit antibody



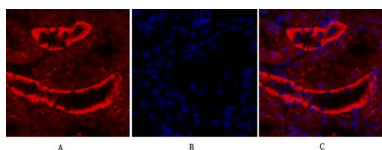
Human pancreas was stained with anti-IRS-1 rabbit antibody



Immunofluorescence analysis of mouse-lung tissue.

1. IRS-1 Monoclonal Antibody(red) was diluted at 1:200(4 ° C, overnight).
2. Cy3 labeled Secondary antibody was diluted at 1:300(room temperature, 50min).
3. DAPI (blue) 10min.

Picture A: Target. Picture B: DAPI. Picture C: merge of A+B



Immunofluorescence analysis of rat-kidney tissue.

1. IRS-1 Monoclonal Antibody(red) was diluted at 1:200(4 ° C, overnight).
2. Cy3 labeled Secondary antibody was diluted at 1:300(room temperature, 50min).
3. DAPI (blue) 10min.

Picture A: Target. Picture B: DAPI. Picture C: merge of A+B