

I κ B- α Rabbit mAb (AR1482)

Key Features

Host Species:	Rabbit
Reactivity:	Human, Mouse, Rat
Applications:	WB, IHC, IF, IP, ELISA
Isotype:	IgG, Kappa
MW:	36kD (Calculated) 36kD (Observed)

Recommended Dilution Ratios

IHC:	1:200-2000
WB:	1:2000-10000
IF:	1:200-1000
ELISA:	1:5000-20000
IP:	1:50-200

Storage

-15°C to -25°C/1 year (Do not lower than -25°C)

Basic Information

Clonality	Monoclonal
-----------	------------

Immunogen Information

Specificity	Endogenous
-------------	------------

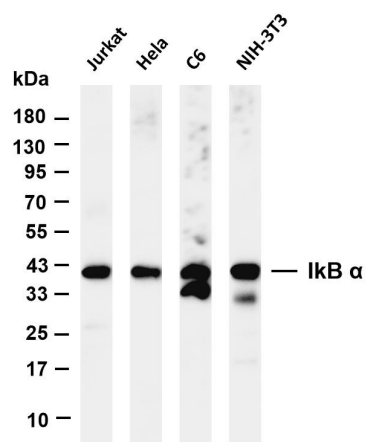
Target Information

Gene name	NFKB1A IKBA MAD3 NFKBI
Protein Name	NF-kappa-B inhibitor alpha

Organism	Gene ID	UniProt ID
Human	4792	P25963
Mouse	18035	Q9Z1E3
Rat	25493	Q63746

Cellular Localization	Cytoplasm, Nucleus
Tissue specificity	Brain, Kidney, Lymph node, Monocyte

Validation Data



Various whole cell lysates were separated by 4-20% SDS-PAGE, and the membrane was blotted with anti-IkB α antibody. The HRP-conjugated Goat anti-Rabbit IgG(H + L) antibody was used to detect the antibody.

Lane 1: Jurkat

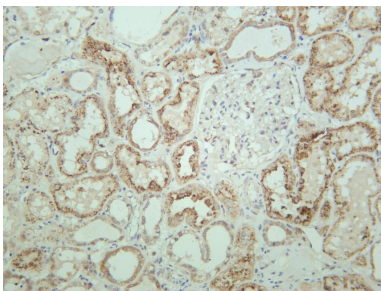
Lane 2: HeLa

Lane 3: C6

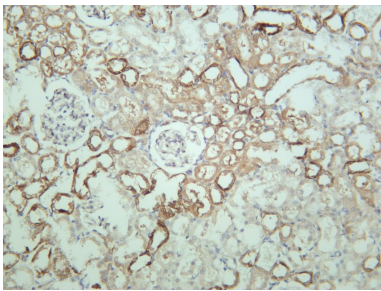
Lane 4: NIH-3T3

Predicted band size: 36kDa

Observed band size: 36kDa



Human kidney was stained with anti-IkB-α rabbit antibody



Rat kidney was stained with anti-IkB-α rabbit antibody

For Research Use Only