

IκB epsilon Rabbit mAb (AR1483)

Key Features

Host Species:	Rabbit
Reactivity:	Human
Applications:	WB,IHC,IF,ICC,IP
Isotype:	IgG,Kappa
MW:	53kD (Calculated) 56kD (Observed)

Recommended Dilution Ratios

WB:	1:1000-5000
IHC:	1:100-300
ICC/IF:	1:100-300
IP:	1:50-100

Storage

-15°C to -25°C/1 year (Do not lower than -25°C)

Basic Information

Clonality	Monoclonal
-----------	------------

Immunogen Information

Specificity	Endogenous
-------------	------------

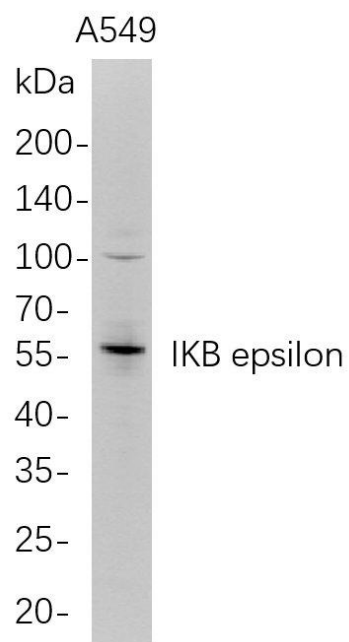
Target Information

Gene name	NFKBIE; IKBE
Protein Name	NF-kappa-B inhibitor epsilon; NF-kappa-BIE; I-kappa-B-epsilon; IkB-E; IkBepsilon; IkappaBepsilon

Organism	Gene ID	UniProt ID
Human	4794	O00221
Mouse	18037	O54910

Cellular Localization	Cytoplasm.
Tissue specificity	Highly expressed in spleen, testis and lung, followed by kidney, pancreas, heart, placenta and brain. Also expressed in granulocytes and macrophages.

Validation Data



Western Blot analysis of A549 whole cell lysates were separated by 4-20% SDS-PAGE, and the membrane was blotted with anti-IKB epsilon rabbit mAb. The HRP-conjugated Goat anti-Rabbit IgG(H + L) antibody was used to detect the antibody.

Lane 1: A549

Predicted band size: 53kDa

Observed band size: 56kDa

For Research Use Only