

JNK2 Rabbit mAb (AR1486)

Key Features

Host Species:	Rabbit
Reactivity:	Human, Mouse, Rat
Applications:	WB, IHC, IF, IP, ELISA
Isotype:	IgG, Kappa
MW:	48kD (Calculated) 46KD, 54kD (Observed)

Recommended Dilution Ratios

IHC:	1:2000-10000
WB:	1:2000-10000
IF:	1:200-1000
ELISA:	1:5000-20000
IP:	1:50-100

Storage

-15°C to -25°C/1 year (Do not lower than -25°C)

Basic Information

Clonality	Monoclonal
-----------	------------

Immunogen Information

Specificity	Endogenous
-------------	------------

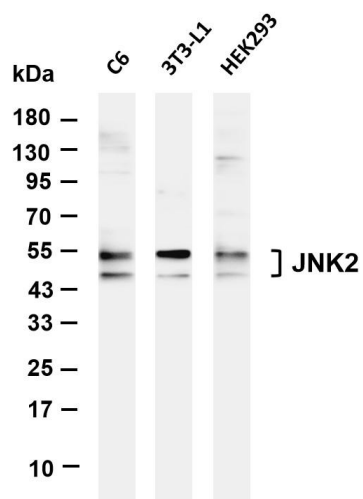
Target Information

Gene name	MAPK9
Protein Name	Mitogen-activated protein kinase 9

Organism	Gene ID	UniProt ID
Human	5601	P45984
Mouse	26420	Q9WTU6
Rat	50658	P49186

Cellular Localization	Cytoplasm. Nucleus. Colocalizes with POU5F1 in the nucleus.
Tissue specificity	Brain, Skin

Validation Data



Various whole cell lysates were separated by 4-20% SDS-PAGE, and the membrane was blotted with anti-JNK2 antibody. The HRP-conjugated Goat anti-Rabbit IgG(H + L) antibody was used to detect the antibody.

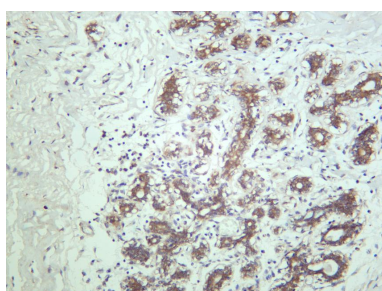
Lane 1: C6

Lane 2: 3T3-L1

Lane 3: HEK293

Predicted band size: 48kDa

Observed band size: 46kDa, 54kDa



Human breast carcinoma was stained with anti-JNK2 rabbit antibody

For Research Use Only