

JNK1/2/3 epsilon Rabbit mAb (AR1485)

Key Features

Host Species:	Rabbit
Reactivity:	Human, Mouse, Rat
Applications:	WB, IF, IP, ELISA
Isotype:	IgG, Kappa
MW:	48 kD, 53kD (Calculated) 48 kD, 53kD (Observed)

Recommended Dilution Ratios

WB:	1:2000-10000
IF:	1:200-1000
ELISA:	1:5000-20000
IP:	1:50-100

Storage

-15°C to -25°C/1 year (Do not lower than -25°C)

Basic Information

Clonality	Monoclonal
-----------	------------

Immunogen Information

Specificity	Endogenous
-------------	------------

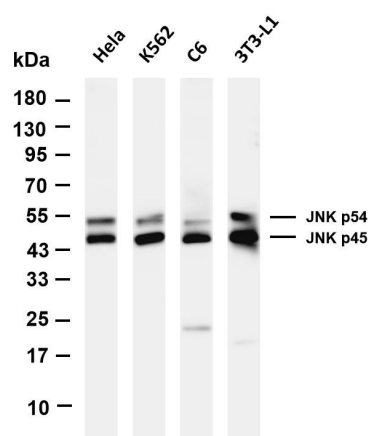
Target Information

Gene name	MAPK8/9/10
Protein Name	Mitogen-activated protein kinase 8/9/10

Organism	Gene ID	UniProt ID
Human	5599; 5601; 5602	P45983; P45984; P53779
Mouse	26419; 26420	
Rat	116554; 50658; 25272	P49185; P49186; P49187

Cellular Localization	Nucleus
Tissue specificity	Brain, Epithelium, Fetal brain, Lung, Pooled, Testis

Validation Data



Various whole cell lysates were separated by 4-20% SDS-PAGE, and the membrane was blotted with anti-JNK1/2/3 antibody. The HRP-conjugated Goat anti-Rabbit IgG(H + L) antibody was used to detect the antibody.

Lane 1: HeLa

Lane 2: K562

Lane 3: C6

Lane 4: 3T3-L1

Predicted band size: 48kDa, 53kDa

Observed band size: 48kDa, 53kDa

For Research Use Only