

KLHL6 Rabbit mAb (AR1489)

Key Features

Host Species:	Rabbit
Reactivity:	Human
Applications:	WB,IF,ICC,IP
Isotype:	IgG,Kappa
MW:	70kD (Calculated) 62kD (Observed)

Recommended Dilution Ratios

WB:	1:1000-5000
ICC/IF:	1:100-300
IP:	1:50-100

Storage

-15°C to -25°C/1 year (Do not lower than -25°C)

Basic Information

Clonality	Monoclonal
-----------	------------

Immunogen Information

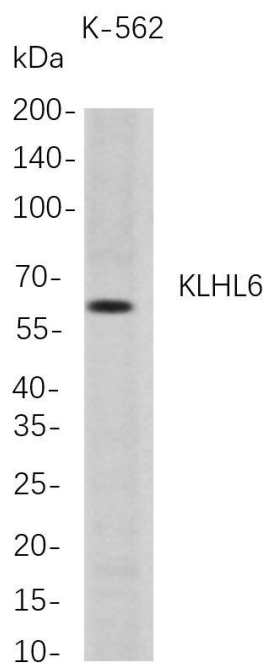
Specificity	Endogenous
-------------	------------

Target Information

Gene name	KLHL6
Protein Name	Kelch-like protein 6

	Organism	Gene ID	UniProt ID
	Human	89857	Q8WZ60
Tissue specificity	Found in germinal center	{ECO:0000269 PubMed:12617994}.	B-cells.

Validation Data



Western Blot analysis of K-562 whole cell lysates were separated by 4-20% SDS-PAGE, and the membrane was blotted with anti-KLHL6 rabbit mAb. The HRP-conjugated Goat anti-Rabbit IgG(H + L) antibody was used to detect the antibody.

Lane 1: K-562

Predicted band size: 70kDa

Predicted band size: 62kDa

For Research Use Only