

LEF1 Rabbit mAb (AR1491)

Key Features

Host Species:	Rabbit
Reactivity:	Human, Mouse, Rat
Applications:	WB, IHC, IF, IP, ELISA
Isotype:	IgG, Kappa
MW:	44kD (Calculated) 45-60kD (Observed)

Recommended Dilution Ratios

IHC:	1:1000-4000
WB:	1:2000-10000
IF:	1:200-1000
ELISA:	1:5000-20000
IP:	1:50-100

Storage

-15°C to -25°C/1 year (Do not lower than -25°C)

Basic Information

Clonality	Monoclonal
-----------	------------

Immunogen Information

Specificity	Endogenous
-------------	------------

Target Information

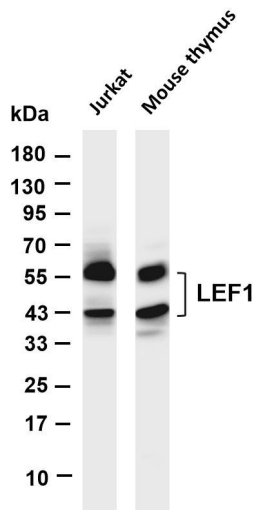
Gene name	LEF1
Protein Name	Lymphoid enhancer-binding factor 1

Organism	Gene ID	UniProt ID
Human	51176	Q9UJU2
Mouse	16842	P27782
Rat	161452	Q9QXN1

Cellular Localization	Nucleus
Tissue specificity	Detected in thymus. Not detected in normal colon, but highly expressed in colon cancer biopsies and colon cancer cell lines.

Expressed in several pancreatic tumors and weakly expressed in normal pancreatic tissue. Isoforms 1 and 5 are detected in several pancreatic cell lines.

Validation Data



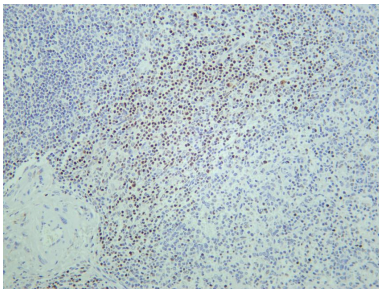
Various whole cell lysates were separated by 4-20% SDS-PAGE, and the membrane was blotted with anti-LEF1 antibody. The HRP-conjugated Goat anti-Rabbit IgG(H + L) antibody was used to detect the antibody.

Lane 1: Jurkat

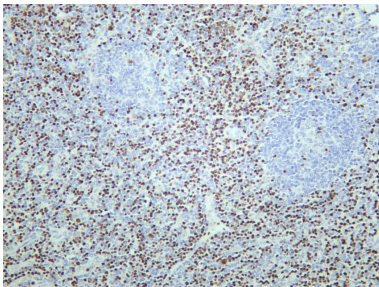
Lane 2: Mouse thymus

Predicted band size: 44kDa

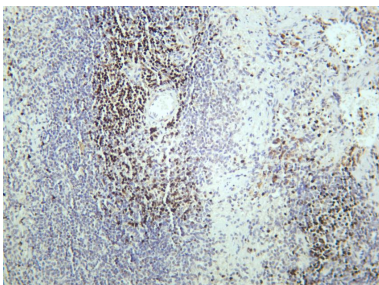
Observed band size: 45-60kDa



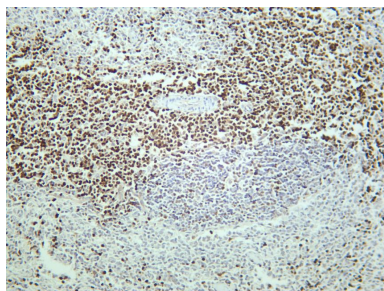
Human spleen was stained with anti-LEF1 rabbit antibody



Human tonsil was stained with anti-LEF1 rabbit antibody



Mouse spleen was stained with anti-LEF1 rabbit antibody



Rat spleen was stained with anti-LEF1 rabbit antibody

For Research Use Only