

LRP6 Rabbit mAb (AR1492)

Key Features

Host Species:	Rabbit
Reactivity:	Human, Mouse
Applications:	WB, IHC, IF, IP, ELISA
Isotype:	IgG, Kappa
MW:	180kD (Calculated) 210kD (Observed)

Recommended Dilution Ratios

IHC:	1:200-1000
WB:	1:2000-10000
IF:	1:200-1000
ELISA:	1:5000-20000
IP:	1:50-100

Storage

-15°C to -25°C/1 year (Do not lower than -25°C)

Basic Information

Clonality	Monoclonal
-----------	------------

Immunogen Information

Specificity	Endogenous
-------------	------------

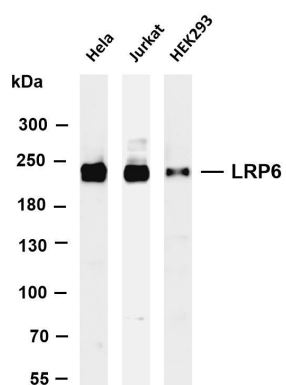
Target Information

Gene name	LRP6
Protein Name	Low-density lipoprotein receptor-related protein 6 (LRP-6)

Organism	Gene ID	UniProt ID
Human	4040	O75581
Mouse		O88572

Cellular Localization	Membrane
Tissue specificity	Widely coexpressed with LRP5 during embryogenesis and in adult tissues.

Validation Data



Various whole cell lysates were separated by 4-8% SDS-PAGE, and the membrane was blotted with anti-LRP6 antibody. The HRP-conjugated Goat anti-Rabbit IgG(H + L) antibody was used to detect the antibody.

Lane 1: HeLa

Lane 2: Jurkat

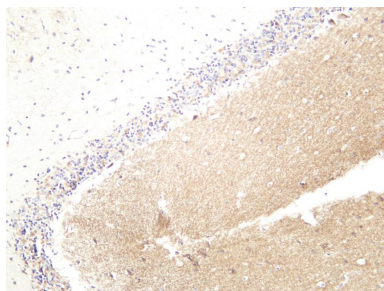
Lane 3: HEK293

Predicted band size: 180kDa

Observed band size: 210kDa



Human brain was stained with anti-LRP6 rabbit antibody



Rat brain was stained with anti-LRP6 rabbit antibody

For Research Use Only