

## LATS1 Rabbit mAb (AR1490)

### Key Features

Host Species:	Rabbit
Reactivity:	Human, Mouse, Rat
Applications:	WB, IF, IP, ELISA
Isotype:	IgG, Kappa
MW:	127kD (Calculated) 140kD (Observed)

### Recommended Dilution Ratios

WB:	1:2000-10000
IF:	1:200-1000
ELISA:	1:5000-20000
IP:	1:50-200

### Storage

-15°C to -25°C/1 year (Do not lower than -25°C)

### Basic Information

Clonality	Monoclonal
-----------	------------

### Immunogen Information

Specificity	Endogenous
-------------	------------

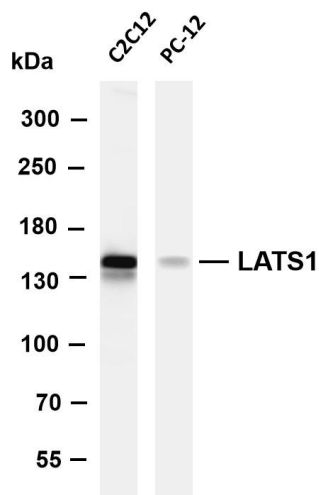
### Target Information

Gene name	LATS1 WARTS
Protein Name	Serine/threonine-protein kinase LATS1 (Large tumor suppressor homolog 1) (WARTS protein kinase) (h-warts)

Organism	Gene ID	UniProt ID
Human	9113	O95835
Mouse	16798	Q8BYR2

Cellular Localization	Cytoplasm
Tissue specificity	Expressed in all adult tissues examined except for lung and kidney.

## Validation Data



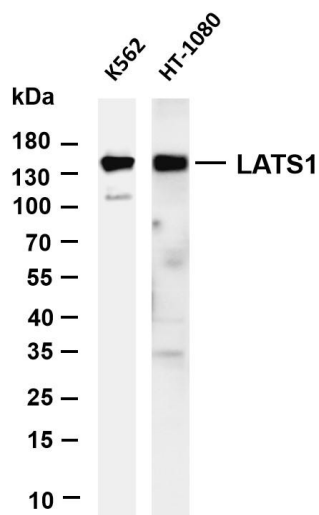
Various whole cell lysates were separated by 4-8% SDS-PAGE, and the membrane was blotted with anti-LATS1 antibody. The HRP-conjugated Goat anti-Rabbit IgG(H + L) antibody was used to detect the antibody.

Lane 1: C2C12

Lane 2: PC-12

Predicted band size: 127kDa

Observed band size: 140kDa



Various whole cell lysates were separated by 4-20% SDS-PAGE, and the membrane was blotted with anti-LATS1 antibody. The HRP-conjugated Goat anti-Rabbit IgG(H + L) antibody was used to detect the antibody.

Lane 1: K562

Lane 2: HT-1080

Predicted band size: 127kDa

Observed band size: 140kDa

For Research Use Only