

LYPD3 Rabbit mAb (AR1493)

Key Features

Host Species:	Rabbit
Reactivity:	Human
Applications:	WB,IHC,IP
Isotype:	IgG,Kappa
MW:	36kD (Calculated) 38kD (Observed)

Recommended Dilution Ratios

IHC:	1:100-300
WB:	1:1000-5000
IP:	1:50-100

Storage

-15°C to -25°C/1 year (Do not lower than -25°C)

Basic Information

Clonality	Monoclonal
-----------	------------

Immunogen Information

Specificity	Endogenous
-------------	------------

Target Information

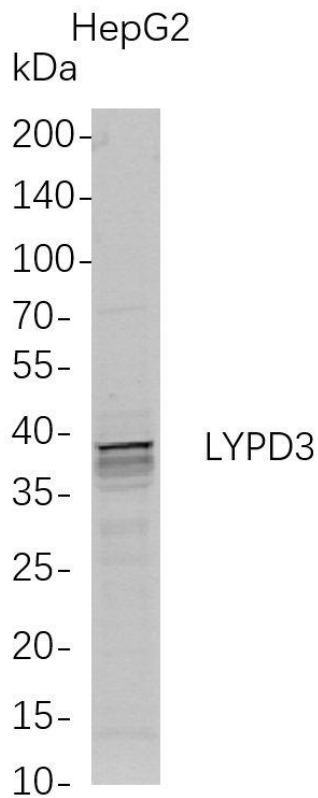
Gene name	LYPD3; C4.4A; UNQ491/PRO1007
Protein Name	Ly6/PLAUR domain-containing protein 3; GPI-anchored metastasis-associated protein C4.4A homolog; Matrigel-induced gene C4 protein; MIG-C4;

Organism	Gene ID	UniProt ID
Human	27076	O95274

Cellular Localization	Cell membrane; Lipid-anchor, GPI-anchor. Expressed in placenta, skin and urothelium. Found in suprabasal keratinocytes of chronic wounds. Weak expression is found in esophagus and peripheral blood mononuclear cells. Found in the majority of primary and metastatic transitional cell carcinomas (TCCs) and as well in breast cancer tissues, but not in adjacent normal tissues. High expression is found in the tumor component
Tissue specificity	

of some noninvasive superficial lesions and in invasive and metastatic urothelial cancers. {ECO:0000269|PubMed:11179665, ECO:0000269|PubMed:12592373, ECO:0000269|PubMed:15012588}.

Validation Data



Western Blot analysis of HepG2 whole cell lysates were separated by 4-20% SDS-PAGE, and the membrane was blotted with anti-LYPD3 rabbit mAb. The HRP-conjugated Goat anti-Rabbit IgG(H + L) antibody was used to detect the antibody.

Lane 1: HepG2

Predicted band size: 36kDa

Observed band size: 38kDa

For Research Use Only