

MAPKAPK-2 Rabbit mAb (AR1495)

Key Features

Host Species:	Rabbit
Reactivity:	Human,Mouse,Rat
Applications:	WB,IF,IP,ELISA
Isotype:	IgG,Kappa
MW:	46kD (Calculated) 46,55kD (Observed)

Recommended Dilution Ratios

WB:	1:2000-10000
IF:	1:200-1000
ELISA:	1:5000-20000
IP:	1:50-200

Storage

-15°C to -25°C/1 year (Do not lower than -25°C)

Basic Information

Clonality	Monoclonal
-----------	------------

Immunogen Information

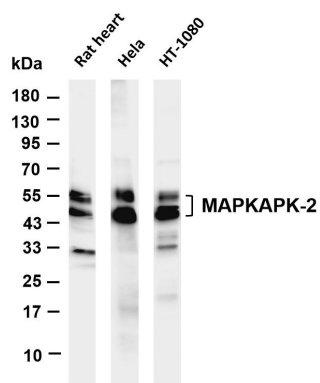
Specificity	Endogenous
-------------	------------

Target Information

Gene name	MAPKAPK2
Protein Name	MAP kinase-activated protein kinase 2

	Organism	Gene ID	UniProt ID
	Human	9261	P49137
	Mouse	17164	P49138
Cellular Localization	Cytoplasm. Nucleus. Phosphorylation and subsequent activation releases the autoinhibitory helix, resulting in the export from the nucleus into the cytoplasm.		
Tissue specificity	Expressed in all tissues examined.		

Validation Data



Various whole cell lysates were separated by 4-20% SDS-PAGE, and the membrane was blotted with anti-MAPKAPK-2 antibody. The HRP-conjugated Goat anti-Rabbit IgG(H + L) antibody was used to detect the antibody.

Lane 1: Rat heart

Lane 2: HeLa

Lane 3: HT-1080

Predicted band size: 46kDa

Observed band size: 46kDa, 55kDa

For Research Use Only