

## MAP2 Rabbit mAb (AR1494)

### Key Features

|               |  |
|---------------|--|
| Host Species: | Rabbit                                 |
| Reactivity:   | Human, Mouse, Rat                      |
| Applications: | WB, IHC, IF, IP, ELISA                 |
| Isotype:      | IgG, Kappa                             |
| MW:           | 200kD (Calculated)<br>280kD (Observed) |

### Recommended Dilution Ratios

|        |              |
|--------|--------------|
| IHC:   | 1:200-1000   |
| WB:    | 1:1000-5000  |
| IF:    | 1:200-1000   |
| ELISA: | 1:5000-20000 |
| IP:    | 1:50-200     |

### Storage

-15°C to -25°C/1 year (Do not lower than -25°C)

### Basic Information

|           |            |
|-----------|------------|
| Clonality | Monoclonal |
|-----------|------------|

### Immunogen Information

|             |            |
|-------------|------------|
| Specificity | Endogenous |
|-------------|------------|

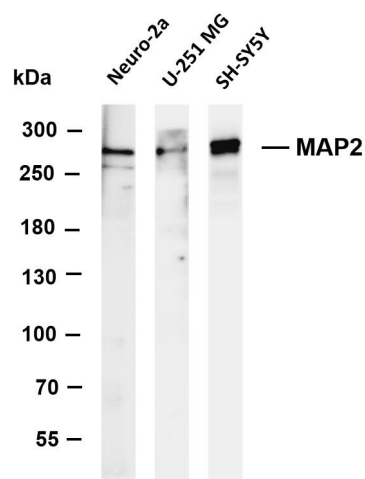
### Target Information

|              |                                  |
|--------------|----------------------------------|
| Gene name    | MAP2                             |
| Protein Name | Microtubule-associated protein 2 |

| Organism | Gene ID | UniProt ID |
|----------|---------|------------|
| Human    | 4133    | P11137     |
| Mouse    |         | P20357     |
| Rat      |         | P15146     |

|                       |   |
|-----------------------|---|
| Cellular Localization | Cytoplasm, cytoskeleton. Cell projection, dendrite. |
| Tissue specificity    | Brain, Brain cortex, Epithelium, Pancreas, Testis   |

## Validation Data



Various whole cell lysates were separated by 4-8% SDS-PAGE, and the membrane was blotted with anti-MAP2 antibody. The HRP-conjugated Goat anti-Rabbit IgG(H + L) antibody was used to detect the antibody.

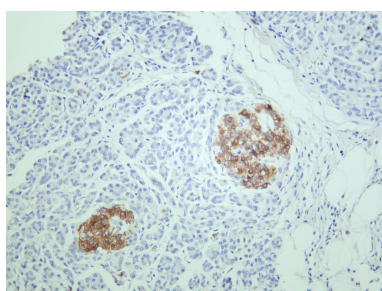
Lane 1: Neuro-2a

Lane 2: U-251 MG

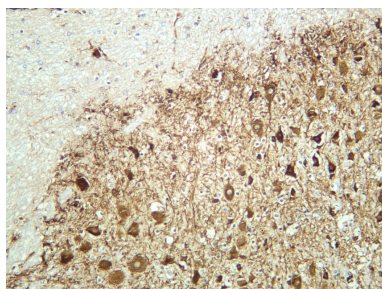
Lane 3: SH-SY5Y

Predicted band size: 200kDa

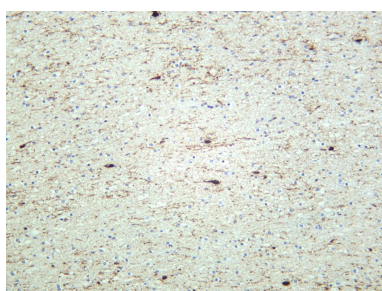
Observed band size: 280kDa



Human pancreas was stained with anti-MAP2 rabbit antibody



Mouse brain was stained with anti-MAP2 rabbit antibody



Human brain was stained with anti-MAP2 rabbit antibody

For Research Use Only